

856 Ship Notice/Manifest

PREFACE

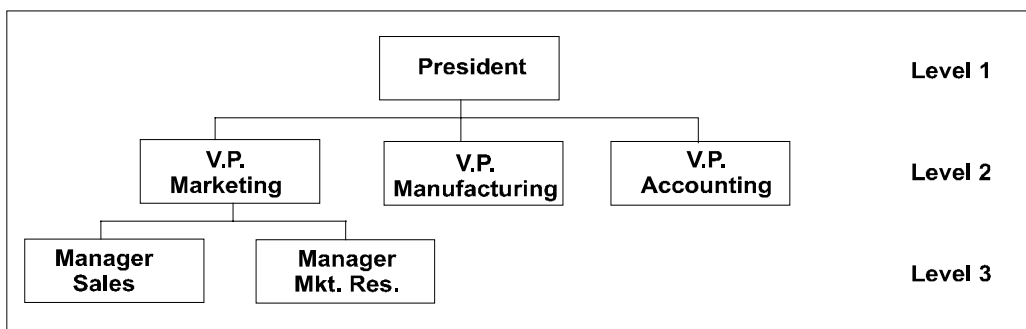
This is the AIAG's recommended usage for the 856 - Ship Notice/Manifest for ASC X12 version release 004010. Prior to starting any activity to implement EDI, the trading partner should be contacted.

As part of the publication process for AIAG EDI Implementation Guidelines for release 004010, the AIAG has developed supplemental documents, the *Supply Chain Recommended Business Practices for EDI Implementation* in a **PUSH** (requirement-based) or **PULL** (consumption-based) manufacturing environment. These should be used for first time implementers or those making significant changes to their existing implementations.

USAGE CONVENTIONS

Note: This section is a compilation of previously established EDI usage conventions. If the *Supply Chain Recommended Business Practices for EDI Implementation* is being used, disregard this section.

This transaction is more complex than the typical ASC X12 transaction set. Therefore, a slightly different approach was taken in the implementation guidelines to make it easier to understand. The complexity can be attributed to the design concept of using hierarchical levels. To visualize what this means, think of a typical organization chart:



This organization chart shows three levels. The ship notice/manifest organizes data in the same manner as the organization chart.

There are two or more levels used for purchased parts. One level contains information for the entire shipment (i.e., Shipment ID Number, Gross Shipment weight) and the other level will occur one or more times under the shipment level and contains information about each part in the shipment. The Shipment Level (HL03 = "S") is used for the first level. The level used for the part information is different amongst the OEMs. Most commonly used are the Order Level (HL03 = "O") and the Item Level (HL03 = "I"). For purchased parts, these levels contain the same basic part information.

- Shipment Level
- Order Level
- Item Level

For those who desire to understand the structure of the ship notice manifest we have included the following explanation. An important feature of the ship notice/manifest is the concept of the hierarchical level. Much as an organization chart relates groups of people in an organization, the hierarchical level in a ship notice/manifest depicts relationships among levels of detail in a shipment: pallets on a truck, part numbers on a pallet, cartons of a part number, etc. The following hierarchical levels are used in the automotive industry:

SHIPMENT	(S)	Data that applies to the whole shipment, such as bill of lading number, lading quantity, supplier code, etc.
EQUIPMENT	(E)	Data that is unique to the delivery equipment. This level would normally appear only if there are multiple pieces of equipment involved in the shipment. If the shipment is contained within one truck, for example, equipment data is included in the shipment level.
ORDER	(O)	Data related to the customer's order. The order level is used to show the part number, customer order number, vendor order number and weights
TARE	(T)	Data related to a shipping container, such as a pallet, bin, or rack where it is necessary to maintain a collective identity of the items in that container. If a pallet is controlled by a master label, for example, the tare level would be used.
KIT	(K)	Data related to an identifiable collection of items, such as a carburetor repair kit.
ITEM	(I)	Data related to the product being shipped. This level will be used unless no detail is required
PACK	(P)	Data related to the package, carton, etc. in which the item is shipped, such as label serial numbers and physical measurements.
SUBPACK	(Q)	Data related to a grouping of packages within the pack level, for example, a pack of cigarettes would be a subpack of a carton of cigarettes

Values in parentheses represent codes used in HL03 (hierarchical level code).

Hierarchical levels may be used in any sequence and levels may be skipped, providing the flexibility to specify only the amount of detail and the sequence required. For example, by transmitting only the shipment level, a supplier can satisfy a customer's need to know only that a specific order has been shipped, with no detail. At the other extreme, the ship notice/manifest can be used to provide shipping manifest detail down to descriptions of subpacks within cartons. The decision as to how much detail is required is a matter of mutual agreement between customer and supplier. The relationships among hierarchical levels in a specific ship notice/manifest are defined by the use of the mandatory **HL** segment:

HL	*	HL01 628 Hierarchical ID Number M AN 1/12	*	HL02 734 Hierarchical Parent ID Number O ID 1/12	*	HL03 735 Hierarchical Level Code M ID 1/2
	*	HL04 736 Hierarchical Child Code O ID 1/1		N/L		

HL01 (HIERARCHICAL ID NUMBER)

This data element must contain a unique label for each occurrence of the HL segment in the ship notice/manifest. An HL segment is required to define each node in the hierarchical "tree" (see example on the page 5). For example, in a simple ship notice/manifest with three line items in a shipment of one order, five occurrences of the HL segment are required: one for the shipment level, one for order and one for each item. By convention, the hierarchical ID number should start with "1" for the first occurrence of the HL segment in the transaction set and increment by one for each occurrence thereafter within the same transaction set. The number will return to "1" for the next transaction set.

HL02 (HIERARCHICAL PARENT ID NUMBER)

This data element identifies the hierarchical ID number of the HL segment to which it is subordinate. In our simple example below, the hierarchical parent ID number of each of the line item occurrences of the HL segments will be "2", identifying the order level HL segment. The value of HL02 for the shipment HL segment will be null because it has no parent HL segment; HL02 is required for all other occurrences of the HL segment.

HL03 (HIERARCHICAL LEVEL CODE)

This data element provides the level of detail implied by the series of segments that follow the current HL segment, up to the next occurrences of the HL segment in the transaction set. For example, if HL03 is "S", it indicates the following segments form a logical grouping of data relating to shipment level information. Similarly, if HL03 is "I", it indicates the segments that follow refer to item information.

HL04 (HIERARCHICAL CHILD CODE)

This data element indicates whether there are subordinate, or child, HL segments to the current HL segment. Use of this data element is optional. If used, a value of "0" (zero) will indicate no subordinate HL segments and a value of "1" (one) will indicate one or more subordinate HL segments.

The numbering for and transmission of HL segments for multiple-level shipments is "top-to-bottom, left-to-right".

The example on the following page shows a shipment of two containers shipped on a truck from a supplier to a customer.

There are three levels of detail: shipment, order and item.

- **HEADING AREA**
 - The example has a heading area consisting of three segments: the "ST", the "BSN" and the "DTM".
- **SHIPMENT AREA**
 - Shipment Gross and Net Weights
 - Number of Packages
 - Carrier and Vehicle Numbers
 - Packing List Number
 - Shipped to
 - Shipped from
- **ORDER AREA**
 - Customer's Part Number
 - Total Quantity Shipped, Cumulative Quantity Shipped
 - Customer's Order Number
 - Total Number of Containers
- **ITEM AREA**
 - Detail Quantity Shipped
 - Item Label Serial Number
- **TRAILER AREA**
 - The last two segments shown, "CTT" and "SE", are trailer segments for control totals.

856 Ship Notice/Manifest

FUNCTIONAL GROUP: SH

This Draft Standard for Trial Use contains the format and establishes the data contents of the Ship Notice/Manifest Transaction Set (856) for use within the context of an Electronic Data Interchange (EDI) environment. The transaction set can be used to list the contents of a shipment of goods as well as additional information relating to the shipment, such as order information, product description, physical characteristics, type of packaging, marking, carrier information, and configuration of goods within the transportation equipment. The transaction set enables the sender to describe the contents and configuration of a shipment in various levels of detail and provides an ordered flexibility to convey information.

The sender of this transaction is the organization responsible for detailing and communicating the contents of a shipment, or shipments, to one or more receivers of the transaction set. The receiver of this transaction set can be any organization having an interest in the contents of a shipment or information about the contents of a shipment.

Table 1

PAGE	POS.NO.	SEG.ID	NAME	REQ.DES.	MAX USE	LOOP REPEAT
11	010	ST	Transaction Set Header	M	1	
12	020	BSN	Beginning Segment for Ship Notice	M	1	
13	040	DTM	Date/Time Reference	O	10	

Table 2 - Shipment

PAGE	POS.NO.	SEG.ID	NAME	REQ.DES.	MAX USE	LOOP REPEAT
		LOOP ID - HL				200000
14	010	HL	Hierarchical Level	M	1	
N/U	020	LIN	Item Identification	O	1	
N/U	030	SN1	Item Detail (Shipment)	O	1	
N/U	040	SLN	Subline Item Detail	O	1000	
N/U	050	PRF	Purchase Order Reference	O	1	
N/U	060	PO4	Item Physical Details	O	1	
N/U	070	PID	Product/Item Description	O	200	
15	080	MEA	Measurements	O	40	
N/U	090	PWK	Paperwork	O	25	
N/U	100	PKG	Marking, Packaging, Loading	O	25	
17	110	TD1	Carrier Details (Quantity and Weight)	O	20	
18	120	TD5	Carrier Details (Routing Sequence/Transit Time)	O	12	
20	130	TD3	Carrier Details (Equipment)	O	12	
21	140	TD4	Carrier Details (Special Handling, or Hazardous Materials, or Both)	O	5	
N/U	145	TSD	Trailer Shipment Details	O	1	
22	150	REF	Reference Identification	O	>1	
N/U	151	PER	Administrative Communications Contact	O	3	
		LOOP ID - HL/LH1				100
N/U	152	LH1	Hazardous Identification Information	O	1	
N/U	153	LH2	Hazardous Classification Information	O	4	
N/U	154	LH3	Hazardous Material Shipping Name	O	12	
N/U	155	LFH	Freeform Hazardous Material Information	O	20	
N/U	156	LEP	EPA Required Data	O	>1	
N/U	157	LH4	Canadian Dangerous Requirements	O	1	

N/U	158	LHT	Transborder Hazardous Requirements	O	3
N/U	159	LHR	Hazardous Material Identifying Reference Numbers	O	10
N/U	160	PER	Administrative Communications Contact	O	5
N/U	161	LHE	Empty Equipment Hazardous Material Information	O	1
LOOP ID - HL/CLD					200
N/U	170	CLD	Load Detail	O	1
N/U	180	REF	Reference Identification	O	200
N/U	185	DTP	Date or Time or Period	O	1
N/U	190	MAN	Marks and Numbers	O	>1
N/U	200	DTM	Date/Time Reference	O	10
23	210	FOB	F.O.B. Related Instructions	O	1
N/U	215	PAL	Pallet Information	O	1
LOOP ID - HL/N1					200
24	220	N1	Name	O	1
N/U	230	N2	Additional Name Information	O	2
N/U	240	N3	Address Information	O	2
N/U	250	N4	Geographic Location	O	1
25	260	REF	Reference Identification	O	12
N/U	270	PER	Administrative Communications Contact	O	3
N/U	280	FOB	F.O.B. Related Instructions	O	1
N/U	290	SDQ	Destination Quantity	O	50
26	300	ETD	Excess Transportation Detail	O	1
27	310	CUR	Currency	O	1
LOOP ID - HL/SAC					>1
29	320	SAC	Service, Promotion, Allowance, or Charge Information	O	1
N/U	325	CUR	Currency	O	1
N/U	330	GF	Furnished Goods and Services	O	1
N/U	335	YNQ	Yes/No Question	O	10
LOOP ID - HL/LM					10
N/U	340	LM	Code Source Information	O	1
N/U	350	LQ	Industry Code	M	100
LOOP ID - HL/V1					>1
31	360	V1	Vessel Identification	O	1
32	370	R4	Port or Terminal	O	>1
33	380	DTM	Date/Time Reference	O	>1

Table 2 - Order

PAGE	POS.NO.	SEG.ID	NAME	REQ.DES.	MAX USE	LOOP REPEAT
LOOP ID - HL						200000
34	010	HL	Hierarchical Level	M	1	
35	020	LIN	Item Identification	O	1	
37	030	SN1	Item Detail (Shipment)	O	1	
N/U	040	SLN	Subline Item Detail	O	1000	
38	050	PRF	Purchase Order Reference	O	1	
N/U	060	PO4	Item Physical Details	O	1	
N/U	070	PID	Product/Item Description	O	200	
N/U	080	MEA	Measurements	O	40	
N/U	090	PWK	Paperwork	O	25	
N/U	100	PKG	Marking, Packaging, Loading	O	25	
N/U	110	TD1	Carrier Details (Quantity and Weight)	O	20	
N/U	120	TD5	Carrier Details (Routing Sequence/Transit Time)	O	12	

N/U	130	TD3	Carrier Details (Equipment)	O	12
N/U	140	TD4	Carrier Details (Special Handling, or Hazardous Materials, or Both)	O	5
N/U	145	TSD	Trailer Shipment Details	O	1
39	150	REF	Reference Identification	O	>1
N/U	151	PER	Administrative Communications Contact	O	3
LOOP ID - HL/LH1					100
N/U	152	LH1	Hazardous Identification Information	O	1
N/U	153	LH2	Hazardous Classification Information	O	4
N/U	154	LH3	Hazardous Material Shipping Name	O	12
N/U	155	LFH	Freeform Hazardous Material Information	O	20
N/U	156	LEP	EPA Required Data	O	>1
N/U	157	LH4	Canadian Dangerous Requirements	O	1
N/U	158	LHT	Transborder Hazardous Requirements	O	3
N/U	159	LHR	Hazardous Material Identifying Reference Numbers	O	10
N/U	160	PER	Administrative Communications Contact	O	5
N/U	161	LHE	Empty Equipment Hazardous Material Information	O	1
LOOP ID - HL/CLD					200
40	170	CLD	Load Detail	O	1
41	180	REF	Reference Identification	O	200
N/U	185	DTP	Date or Time or Period	O	1
N/U	190	MAN	Marks and Numbers	O	>1
N/U	200	DTM	Date/Time Reference	O	10
N/U	210	FOB	F.O.B. Related Instructions	O	1
N/U	215	PAL	Pallet Information	O	1
LOOP ID - HL/N1					200
42	220	N1	Name	O	1
N/U	230	N2	Additional Name Information	O	2
N/U	240	N3	Address Information	O	2
N/U	250	N4	Geographic Location	O	1
43	260	REF	Reference Identification	O	12
N/U	270	PER	Administrative Communications Contact	O	3
N/U	280	FOB	F.O.B. Related Instructions	O	1
N/U	290	SDQ	Destination Quantity	O	50
44	300	ETD	Excess Transportation Detail	O	1
N/U	310	CUR	Currency	O	1
LOOP ID - HL/SAC					>1
45	320	SAC	Service, Promotion, Allowance, or Charge Information	O	1
N/U	325	CUR	Currency	O	1
N/U	330	GF	Furnished Goods and Services	O	1
N/U	335	YNQ	Yes/No Question	O	10
LOOP ID - HL/LM					10
N/U	340	LM	Code Source Information	O	1
N/U	350	LQ	Industry Code	M	100
LOOP ID - HL/V1					>1
47	360	V1	Vessel Identification	O	1
48	370	R4	Port or Terminal	O	>1
49	380	DTM	Date/Time Reference	O	>1

Table 2 - Item

PAGE	POS.NO.	SEG.ID	NAME	REQ.DES.	MAX USE	LOOP REPEAT
LOOP ID - HL						200000
50	010	HL	Hierarchical Level	M	1	
51	020	LIN	Item Identification	O	1	
53	030	SN1	Item Detail (Shipment)	O	1	
N/U	040	SLN	Subline Item Detail	O	1000	
54	050	PRF	Purchase Order Reference	O	1	
N/U	060	PO4	Item Physical Details	O	1	
N/U	070	PID	Product/Item Description	O	200	
55	080	MEA	Measurements	O	40	
N/U	090	PWK	Paperwork	O	25	
N/U	100	PKG	Marking, Packaging, Loading	O	25	
N/U	110	TD1	Carrier Details (Quantity and Weight)	O	20	
N/U	120	TD5	Carrier Details (Routing Sequence/Transit Time)	O	12	
N/U	130	TD3	Carrier Details (Equipment)	O	12	
N/U	140	TD4	Carrier Details (Special Handling, or Hazardous Materials, or Both)	O	5	
N/U	145	TSD	Trailer Shipment Details	O	1	
57	150	REF	Reference Identification	O	>1	
N/U	151	PER	Administrative Communications Contact	O	3	
LOOP ID - HL/LH1						100
N/U	152	LH1	Hazardous Identification Information	O	1	
N/U	153	LH2	Hazardous Classification Information	O	4	
N/U	154	LH3	Hazardous Material Shipping Name	O	12	
N/U	155	LFH	Freeform Hazardous Material Information	O	20	
N/U	156	LEP	EPA Required Data	O	>1	
N/U	157	LH4	Canadian Dangerous Requirements	O	1	
N/U	158	LHT	Transborder Hazardous Requirements	O	3	
N/U	159	LHR	Hazardous Material Identifying Reference Numbers	O	10	
N/U	160	PER	Administrative Communications Contact	O	5	
N/U	161	LHE	Empty Equipment Hazardous Material Information	O	1	
LOOP ID - HL/CLD						200
58	170	CLD	Load Detail	O	1	
59	180	REF	Reference Identification	O	200	
N/U	185	DTP	Date or Time or Period	O	1	
N/U	190	MAN	Marks and Numbers	O	>1	
60	200	DTM	Date/Time Reference	O	10	
N/U	210	FOB	F.O.B. Related Instructions	O	1	
N/U	215	PAL	Pallet Information	O	1	
LOOP ID - HL/N1						200
61	220	N1	Name	O	1	
N/U	230	N2	Additional Name Information	O	2	
N/U	240	N3	Address Information	O	2	
N/U	250	N4	Geographic Location	O	1	
62	260	REF	Reference Identification	O	12	
N/U	270	PER	Administrative Communications Contact	O	3	
N/U	280	FOB	F.O.B. Related Instructions	O	1	
N/U	290	SDQ	Destination Quantity	O	50	
63	300	ETD	Excess Transportation Detail	O	1	
N/U	310	CUR	Currency	O	1	

		LOOP ID - HL/SAC			>1
64	320	SAC	Service, Promotion, Allowance, or Charge Information	O	1
N/U	325	CUR	Currency	O	1
N/U	330	GF	Furnished Goods and Services	O	1
N/U	335	YNQ	Yes/No Question	O	10
		LOOP ID - HL/LM			10
N/U	340	LM	Code Source Information	O	1
N/U	350	LQ	Industry Code	M	100
		LOOP ID - HL/V1			>1
66	360	V1	Vessel Identification	O	1
67	370	R4	Port or Terminal	O	>1
68	380	DTM	Date/Time Reference	O	>1

Table 3

PAGE	POS.NO.	SEG.ID	NAME	REQ.DES.	MAX USE	LOOP REPEAT
69	010	CTT	Transaction Totals	O	1	
70	020	SE	Transaction Set Trailer	M	1	

Segment: ST Transaction Set Header

Level: Header

Loop: ____

Usage: Mandatory

Max Use: 1

Purpose: To indicate the start of a transaction set and to assign a control number

Semantic: 1 The transaction set identifier (ST01) used by the translation routines of the interchange partners to select the appropriate transaction set definition (e.g., 810 selects the Invoice Transaction Set).

Notes: The Transaction Set Control Number (ST02) in this header must match the Transaction Set Control Number (SE02) in the Transaction Set Trailer (SE).

Data Element Summary

REF. DES.	DATA ELE.	NAME	ATTRIBUTES
ST01	143	Transaction Set Identifier Code	M ID 3/3
		Code uniquely identifying a Transaction Set	
		CODE DEFINITION	
		856 Ship Notice/Manifest	
ST02	329	Transaction Set Control Number	M AN 4/9
		Identifying control number that must be unique within the transaction set functional group assigned by the originator for a transaction set	

Segment: BSN Beginning Segment for Ship Notice

Level: Header

Loop: ____

Usage: Mandatory

Max Use: 1

Purpose: To transmit identifying numbers, dates, and other basic data relating to the transaction set

Syntax: 1 C0706 - If BSN07 is present, then BSN06 is required.

Semantic: 1 BSN03 is the date the shipment transaction set is created.

2 BSN04 is the time the shipment transaction set is created.

3 BSN06 is limited to shipment related codes.

Comments: A BSN06 and BSN07 differentiate the functionality of use for the transaction set.

Notes: The date and time are the date and local time of the creation of the transaction.

Data Element Summary

REF. DES.	DATA ELE.	NAME	ATTRIBUTES
BSN01	353	Transaction Set Purpose Code Code identifying purpose of transaction set	M ID 2/2
		CODE DEFINITION	
		00 Original	
		01 Cancellation	
		05 Replace	
BSN02	396	Shipment Identification A unique control number assigned by the original shipper to identify a specific shipment	M AN 2/30
		Unique supplier-assigned number that is not repeated within a one year period when BSN01 = "00".	
BSN03	373	Date Date expressed as CCYYMMDD	M DT 8/8
BSN04	337	Time Time expressed in 24-hour clock time as follows: HHMM, or HHMMSS, or HHMMSSD, or HHMMSSDD, where H = hours (00-23), M = minutes (00-59), S = integer seconds (00-59) and DD = decimal seconds; decimal seconds are expressed as follows: D = tenths (0-9) and DD = hundredths (00-99)	M TM 4/8
BSN05	1005	Hierarchical Structure Code Code indicating the hierarchical application structure of a transaction set that utilizes the HL segment to define the structure of the transaction set	O ID 4/4
Not Used	BSN06	640 Transaction Type Code Code specifying the type of transaction	X ID 2/2
Not Used	BSN07	641 Status Reason Code Code indicating the status reason	O ID 3/3

Segment: DTM Date/Time Reference

Level: Header

Loop: ____

Usage: Optional

Max Use: 10

Purpose: To specify pertinent dates and times

- Syntax:**
- 1 R020305 - At least one of DTM02, DTM03 or DTM05 is required.
 - 2 C0403 - If DTM04 is present, then DTM03 is required.
 - 3 P0506 - If either DTM05 or DTM06 is present, then the other is required.

Data Element Summary

	REF. DES.	DATA ELE.	NAME	ATTRIBUTES		
	DTM01	374	Date/Time Qualifier Code specifying type of date or time, or both date and time One DTM segment with a code value of "011" is required.	M	ID	3/3
			CODE	DEFINITION		
			011	Shipped		
			017	Estimated Delivery		
Required	DTM02	373	Date Date expressed as CCYYMMDD	X	DT	8/8
Required	DTM03	337	Time Time expressed in 24-hour clock time as follows: HHMM, or HHMMSS, or HHMMSSD, or HHMMSSDD, where H = hours (00-23), M = minutes (00-59), S = integer seconds (00-59) and DD = decimal seconds; decimal seconds are expressed as follows: D = tenths (0-9) and DD = hundredths (00-99)	X	TM	4/8
	DTM04	623	Time Code Code identifying the time. In accordance with International Standards Organization standard 8601, time can be specified by a + or - and an indication in hours in relation to Universal Time Coordinate (UTC) time; since + is a restricted character, + and - are substituted by P and M in the codes that follow If not used, the date and time is assumed to be the shipper's local time for "011" and the receiver's local time "017". Any valid X12 code value except mutually defined.	O	ID	2/2
Not Used	DTM05	1250	Date Time Period Format Qualifier Code indicating the date format, time format, or date and time format	X	ID	2/3
Not Used	DTM06	1251	Date Time Period Expression of a date, a time, or range of dates, times or dates and times	X	AN	1/35

Segment: **HL** Hierarchical Level

Level: Detail -- Shipment

Loop: HL **Repeat:** 200000

Usage: Mandatory

Max Use: 1

Purpose: To identify dependencies among and the content of hierarchically related groups of data segments

Set Comments: **A** The HL segment is the only mandatory segment within the HL loop, and by itself, the HL segment has no meaning.

Comments: **A** The HL segment is used to identify levels of detail information using a hierarchical structure, such as relating line-item data to shipment data, and packaging data to line-item data.

B The HL segment defines a top-down/left-right ordered structure.

C HL01 shall contain a unique alphanumeric number for each occurrence of the HL segment in the transaction set. For example, HL01 could be used to indicate the number of occurrences of the HL segment, in which case the value of HL01 would be "1" for the initial HL segment and would be incremented by one in each subsequent HL segment within the transaction.

D HL02 identifies the hierarchical ID number of the HL segment to which the current HL segment is subordinate.

E HL03 indicates the context of the series of segments following the current HL segment up to the next occurrence of an HL segment in the transaction. For example, HL03 is used to indicate that subsequent segments in the HL loop form a logical grouping of data referring to shipment, order, or item-level information.

F HL04 indicates whether or not there are subordinate (or child) HL segments related to the current HL segment.

Notes: **HL at the detail Shipment Level must only occur once and must be the first HL in the transaction set.**

Data Element Summary

REF. DES.	DATA ELE.	NAME	ATTRIBUTES				
HL01	628	Hierarchical ID Number A unique number assigned by the sender to identify a particular data segment in a hierarchical structure Use "1" for this occurrence of the HL at the Shipment Level.	M AN 1/12				
HL02	734	Hierarchical Parent ID Number Identification number of the next higher hierarchical data segment that the data segment being described is subordinate to Not used for this occurrence of the HL segment.	O AN 1/12				
HL03	735	Hierarchical Level Code Code defining the characteristic of a level in a hierarchical structure <table><tr><th>CODE</th><th>DEFINITION</th></tr><tr><td>S</td><td>Shipment</td></tr></table>	CODE	DEFINITION	S	Shipment	M ID 1/2
CODE	DEFINITION						
S	Shipment						
HL04	736	Hierarchical Child Code Code indicating if there are hierarchical child data segments subordinate to the level being described	O ID 1/1				

Segment: MEA Measurements

Level: Detail -- Shipment

Loop: HL

Usage: Optional

Max Use: 40

Purpose: To specify physical measurements or counts, including dimensions, tolerances, variances, and weights

- Syntax:**
- 1 R03050608 - At least one of MEA03, MEA05, MEA06 or MEA08 is required.
 - 2 C0504 - If MEA05 is present, then MEA04 is required.
 - 3 C0604 - If MEA06 is present, then MEA04 is required.
 - 4 L07030506 - If MEA07 is present, then at least one of MEA03, MEA05 or MEA06 is required.
 - 5 E0803 - Only one of MEA08 or MEA03 may be present.

Semantic: 1 MEA04 defines the unit of measure for MEA03, MEA05, and MEA06.

Comments: A When citing dimensional tolerances, any measurement requiring a sign (+ or -), or any measurement where a positive (+) value cannot be assumed, use MEA05 as the negative (-) value and MEA06 as the positive (+) value.

Data Element Summary

REF. DES.	DATA ELE.	NAME	ATTRIBUTES
MEA01	737	Measurement Reference ID Code Code identifying the broad category to which a measurement applies	O ID 2/2
		CODE DEFINITION	
		PD Physical Dimensions	
MEA02	738	Measurement Qualifier Code identifying a specific product or process characteristic to which a measurement applies	O ID 1/3
		Code value "G" is required.	
		Code "N" is required for all rail shipments.	
		CODE DEFINITION	
		G Gross Weight	
		N Actual Net Weight	
Required	MEA03	739 Measurement Value The value of the measurement	X R 1/20
Required	MEA04	355 Unit or Basis for Measurement Code Code specifying the units in which a value is being expressed, or manner in which a measurement has been taken	X ID 2/2
		MEA04 is a composite data element, C001, which contains 15 simple data elements. AIAG only utilizes the first component of the composite, data element 355. This implementation guideline reflects that decision by substituting 355 for C001, which is syntactically correct. See chapter 3 entitled "Data Formatting" for further explanation of Composite Data Structures.	
		Any valid X12 code value except mutually defined; 'ZZ'	
		CODE DEFINITION	
		KG Kilogram	
		LB Pound	

Data Element Summary

	REF. DES.	DATA ELE.	NAME	ATTRIBUTES		
Not Used	MEA05	740	Range Minimum The value specifying the minimum of the measurement range	X	R	1/20
Not Used	MEA06	741	Range Maximum The value specifying the maximum of the measurement range	X	R	1/20
Not Used	MEA07	935	Measurement Significance Code Code used to benchmark, qualify or further define a measurement value	O	ID	2/2
Not Used	MEA08	936	Measurement Attribute Code Code used to express an attribute response when a numeric measurement value cannot be determined	X	ID	2/2
Not Used	MEA09	752	Surface/Layer/Position Code Code indicating the product surface, layer or position that is being described	O	ID	2/2
Not Used	MEA10	1373	Measurement Method or Device The method or device used to record the measurement	O	ID	2/4

Segment: TD1 Carrier Details (Quantity and Weight)

Level: Detail -- Shipment

Loop: HL

Usage: Optional

Max Use: 20

Purpose: To specify the transportation details relative to commodity, weight, and quantity

- Syntax:**
- 1 C0102 - If TD101 is present, then TD102 is required.
 - 2 C0304 - If TD103 is present, then TD104 is required.
 - 3 C0607 - If TD106 is present, then TD107 is required.
 - 4 P0708 - If either TD107 or TD108 is present, then the other is required.
 - 5 P0910 - If either TD109 or TD110 is present, then the other is required.

Notes: Used to specify lading quantity and package type.

Data Element Summary

	REF. DES.	DATA ELE.	NAME	ATTRIBUTES	
Required	TD101	103	Packaging Code Code identifying the type of packaging; Part 1: Packaging Form, Part 2: Packaging Material; if the Data Element is used, then Part 1 is always required Use Packaging Code of the shipping unit (e.g. ten boxes on one pallet is specified as one pallet). Any valid X12 code value except mutually defined.	O	AN 3/5
Required	TD102	80	Lading Quantity Number of units (pieces) of the lading commodity	X	NO 1/7
Not Used	TD103	23	Commodity Code Qualifier Code identifying the commodity coding system used for Commodity Code	O	ID 1/1
Not Used	TD104	22	Commodity Code Code describing a commodity or group of commodities	X	AN 1/30
Not Used	TD105	79	Lading Description Description of an item as required for rating and billing purposes	O	AN 1/50
Not Used	TD106	187	Weight Qualifier Code defining the type of weight	O	ID 1/2
Not Used	TD107	81	Weight Numeric value of weight	X	R 1/10
Not Used	TD108	355	Unit or Basis for Measurement Code Code specifying the units in which a value is being expressed, or manner in which a measurement has been taken	X	ID 2/2
Not Used	TD109	183	Volume Value of volumetric measure	X	R 1/8
Not Used	TD110	355	Unit or Basis for Measurement Code Code specifying the units in which a value is being expressed, or manner in which a measurement has been taken	X	ID 2/2

Segment: TD5 Carrier Details (Routing Sequence/Transit Time)

Level: Detail -- Shipment

Loop: HL

Usage: Optional

Required

Max Use: 12

Purpose: To specify the carrier and sequence of routing and provide transit time information

Syntax: 1 R0204050612 - At least one of TD502, TD504, TD505, TD506 or TD512 is required.

2 C0203 - If TD502 is present, then TD503 is required.

3 C0708 - If TD507 is present, then TD508 is required.

4 C1011 - If TD510 is present, then TD511 is required.

5 C1312 - If TD513 is present, then TD512 is required.

6 C1413 - If TD514 is present, then TD513 is required.

7 C1512 - If TD515 is present, then TD512 is required.

Semantic: 1 TD515 is the country where the service is to be performed.

Comments: A When specifying a routing sequence to be used for the shipment movement in lieu of specifying each carrier within the movement, use TD502 to identify the party responsible for defining the routing sequence, and use TD503 to identify the actual routing sequence, specified by the party identified in TD502.

Data Element Summary

	REF. DES.	DATA ELE.	NAME	ATTRIBUTES
Required	TD501	133	Routing Sequence Code Code describing the relationship of a carrier to a specific shipment movement CODE DEFINITION	O ID 1/2
			B Origin/Delivery Carrier (Any Mode)	
Required	TD502	66	Identification Code Qualifier Code designating the system/method of code structure used for Identification Code (67) CODE DEFINITION	X ID 1/2
			2 Standard Carrier Alpha Code (SCAC) SEE CODE SOURCE 17 IN X12 STANDARDS	
Required	TD503	67	Identification Code Code identifying a party or other code	X AN 2/80
Required	TD504	91	Transportation Method/Type Code Code specifying the method or type of transportation for the shipment Any valid X12 code value except mutually defined; 'ZZ'	X ID 1/2
Not Used	TD505	387	Routing Free-form description of the routing or requested routing for shipment, or the originating carrier's identity	X AN 1/35
Not Used	TD506	368	Shipment/Order Status Code Code indicating the status of an order or shipment or the disposition of any difference between the quantity ordered and the quantity shipped for a line item or transaction	X ID 2/2
	TD507	309	Location Qualifier Code identifying type of location If TD504 = 'A', use code value "OR", meaning Origin (Shipping Point).	O ID 1/2

Data Element Summary

REF. DES.	DATA ELE.	NAME		ATTRIBUTES	
		CODE	DEFINITION		
		OR	Origin (Shipping Point)		
		PP	Pool Point		
	TD508 310	Location Identifier		X	AN 1/30
		Code which identifies a specific location			
		Give pool code if TD507 is "PP"; give airport code Identifier if TD507 is "OR" for an air shipment (e.g., DTW = Detroit Metro Airport).			
Not Used	TD509 731	Transit Direction Code		O	ID 2/2
		The point of origin and point of direction			
Not Used	TD510 732	Transit Time Direction Qualifier		O	ID 2/2
		Code specifying the value of time used to measure the transit time			
Not Used	TD511 733	Transit Time		X	R 1/4
		The numeric amount of transit time			
Not Used	TD512 284	Service Level Code		X	ID 2/2
		Code indicating the level of transportation service or the billing service offered by the transportation carrier			
Not Used	TD513 284	Service Level Code		X	ID 2/2
		Code indicating the level of transportation service or the billing service offered by the transportation carrier			
Not Used	TD514 284	Service Level Code		O	ID 2/2
		Code indicating the level of transportation service or the billing service offered by the transportation carrier			
	TD515 26	Country Code		O	ID 2/3
		Code identifying the country			

Segment: TD3 Carrier Details (Equipment)

Level: Detail -- Shipment

Loop: HL

Usage: Optional

Max Use: 12

Purpose: To specify transportation details relating to the equipment used by the carrier

- Syntax:**
- 1 E0110 - Only one of TD301 or TD310 may be present.
 - 2 C0203 - If TD302 is present, then TD303 is required.
 - 3 C0405 - If TD304 is present, then TD305 is required.
 - 4 P0506 - If either TD305 or TD306 is present, then the other is required.

Notes: Maximum use of this TD3 segment is one. This TD3 is used to identify the serial number of the trailer or railcar.

Data Element Summary

	REF. DES.	DATA ELE.	NAME	ATTRIBUTES		
	TD301	40	Equipment Description Code Code identifying type of equipment used for shipment Any valid X12 code value except mutually defined.	X	ID	2/2
	TD302	206	Equipment Initial Prefix or alphabetic part of an equipment unit's identifying number	O	AN	1/4
Required	TD303	207	Equipment Number Sequencing or serial part of an equipment unit's identifying number (pure numeric form for equipment number is preferred)	X	AN	1/10
Not Used	TD304	187	Weight Qualifier Code defining the type of weight	O	ID	1/2
Not Used	TD305	81	Weight Numeric value of weight	X	R	1/10
Not Used	TD306	355	Unit or Basis for Measurement Code Code specifying the units in which a value is being expressed, or manner in which a measurement has been taken	X	ID	2/2
Not Used	TD307	102	Ownership Code Code indicating the relationship of equipment to carrier or ownership of equipment	O	ID	1/1
Not Used	TD308	407	Seal Status Code Code indicating condition of door seal upon arrival	O	ID	2/2
Not Used	TD309	225	Seal Number Unique number on seal used to close a shipment	O	AN	2/15
	TD310	24	Equipment Type Code identifying equipment type	X	ID	4/4

Segment: TD4 Carrier Details (Special Handling, or Hazardous Materials, or Both)

Level: Detail -- Shipment

Loop: HL

Usage: Optional

Max Use: 5

Purpose: To specify transportation special handling requirements, or hazardous materials information, or both

Syntax: 1 R010204 - At least one of TD401, TD402 or TD404 is required.

2 C0203 - If TD402 is present, then TD403 is required.

Semantic: 1 TD405 identifies if a Material Safety Data Sheet (MSDS) exists for this product. A "Y" indicates an MSDS exists for this product; an "N" indicates an MSDS does not exist for this product.

Notes: This segment is REQUIRED if any material contained in the shipment has been classified as hazardous and/or requires special handling.

Data Element Summary

	REF. DES.	DATA ELE.	NAME	ATTRIBUTES		
Required	TD401	152	Special Handling Code Code specifying special transportation handling instructions	X	ID	2/3
Required	TD402	208	Hazardous Material Code Qualifier Code which qualifies the Hazardous Material Class Code (209)	X	ID	1/1
Required	TD403	209	Hazardous Material Class Code Code specifying the kind of hazard for a material	X	AN	1/4
	TD404	352	Description A free-form description to clarify the related data elements and their content	X	AN	1/80
	TD405	1073	Yes/No Condition or Response Code Code indicating a Yes or No condition or response	O	ID	1/1

Segment: REF Reference Identification

Level: Detail -- Shipment

Loop: HL

Usage: Optional

Max Use: >1

Purpose: To specify identifying information

Syntax: 1 R0203 - At least one of REF02 or REF03 is required.

Semantic: 1 REF04 contains data relating to the value cited in REF02.

Data Element Summary

	REF. DES.	DATA ELE.	NAME	ATTRIBUTES		
	REF01	128	Reference Identification Qualifier Code qualifying the Reference Identification Either "BM" or "PK" is required to be transmitted.	M	ID	2/3
			CODE	DEFINITION		
			AO	Appointment Number		
			AW	Air Waybill Number		
			BM	Bill of Lading Number		
			JA	Beginning Job Sequence Number		
			JE	Ending Job Sequence Number		
			MB	Master Bill of Lading		
			PK	Packing List Number		
Required	REF02	127	Reference Identification Reference information as defined for a particular Transaction Set or as specified by the Reference Identification Qualifier	X	AN	1/30
Not Used	REF03	352	Description A free-form description to clarify the related data elements and their content	X	AN	1/80
Not Used	REF04	C040	Reference Identifier To identify one or more reference numbers or identification numbers as specified by the Reference Qualifier	O		

Segment: FOB F.O.B. Related Instructions

Level: Detail -- Shipment

Loop: HL

Usage: Optional

Max Use: 1

Purpose: To specify transportation instructions relating to shipment

Syntax: 1 C0302 - If FOB03 is present, then FOB02 is required.

2 C0405 - If FOB04 is present, then FOB05 is required.

3 C0706 - If FOB07 is present, then FOB06 is required.

4 C0809 - If FOB08 is present, then FOB09 is required.

Semantic: 1 FOB01 indicates which party will pay the carrier.

2 FOB02 is the code specifying transportation responsibility location.

3 FOB06 is the code specifying the title passage location.

4 FOB08 is the code specifying the point at which the risk of loss transfers. This may be different than the location specified in FOB02/FOB03 and FOB06/FOB07.

Data Element Summary

	REF. DES.	DATA ELE.	NAME	ATTRIBUTES		
	FOB01	146	Shipment Method of Payment Code identifying payment terms for transportation charges	M	ID	2/2
			CODE DEFINITION			
			CC Collect			
			PC Prepaid but Charged to Customer			
			PP Prepaid (by Seller)			
Not Used	FOB02	309	Location Qualifier Code identifying type of location	X	ID	1/2
Not Used	FOB03	352	Description A free-form description to clarify the related data elements and their content	O	AN	1/80
Not Used	FOB04	334	Transportation Terms Qualifier Code Code identifying the source of the transportation terms	O	ID	2/2
Not Used	FOB05	335	Transportation Terms Code Code identifying the trade terms which apply to the shipment transportation responsibility	X	ID	3/3
Not Used	FOB06	309	Location Qualifier Code identifying type of location	X	ID	1/2
Not Used	FOB07	352	Description A free-form description to clarify the related data elements and their content	O	AN	1/80
Not Used	FOB08	54	Risk of Loss Code Code specifying where responsibility for risk of loss passes	O	ID	2/2
Not Used	FOB09	352	Description A free-form description to clarify the related data elements and their content	X	AN	1/80

Segment: N1 Name

Level: Detail -- Shipment

Loop: HL/N1 **Repeat:** 200

Usage: Optional

Max Use: 1

Purpose: To identify a party by type of organization, name, and code

Syntax: 1 R0203 - At least one of N102 or N103 is required.

2 P0304 - If either N103 or N104 is present, then the other is required.

Comments: A This segment, used alone, provides the most efficient method of providing organizational identification. To obtain this efficiency the "ID Code" (N104) must provide a key to the table maintained by the transaction processing party.

B N105 and N106 further define the type of entity in N101.

Data Element Summary

REF. DES.	DATA ELE.	NAME	ATTRIBUTES
N101	98	Entity Identifier Code Code identifying an organizational entity, a physical location, property or an individual	M ID 2/3
		CODE DEFINITION	
		BT Bill-to-Party	
		CS Consolidator	
		MI Planning Schedule/Material Release Issuer	
		SF Ship From	
		ST Ship To	
		SU Supplier/Manufacturer	
N102	93	Name Free-form name	X AN 1/60
Required	N103	66 Identification Code Qualifier Code designating the system/method of code structure used for Identification Code (67)	X ID 1/2
		CODE DEFINITION	
		1 D-U-N-S Number, Dun & Bradstreet SEE CODE SOURCE 16 IN X12 STANDARDS	
Required	N104	67 Identification Code Code identifying a party or other code Suppress internal dashes and spaces.	X AN 2/80
Not Used	N105	706 Entity Relationship Code Code describing entity relationship	O ID 2/2
Not Used	N106	98 Entity Identifier Code Code identifying an organizational entity, a physical location, property or an individual	O ID 2/3

Segment: REF Reference Identification

Level: Detail -- Shipment

Loop: HL/N1

Usage: Optional

Max Use: 12

Purpose: To specify identifying information

Syntax: 1 R0203 - At least one of REF02 or REF03 is required.

Semantic: 1 REF04 contains data relating to the value cited in REF02.

Data Element Summary

	REF. DES.	DATA ELE.	NAME		ATTRIBUTES		
			CODE	DEFINITION			
	REF01	128	Reference Identification Qualifier		M	ID	2/3
			Code qualifying the Reference Identification				
			DK	Dock Number			
			LF	Assembly Line Feed Location			
			RL	Reserve Assembly Line Feed Location			
Required	REF02	127	Reference Identification		X	AN	1/30
			Reference information as defined for a particular Transaction Set or as specified by the Reference Identification Qualifier				
Not Used	REF03	352	Description		X	AN	1/80
			A free-form description to clarify the related data elements and their content				
Not Used	REF04	C040	Reference Identifier		O		
			To identify one or more reference numbers or identification numbers as specified by the Reference Qualifier				

Segment: ETD Excess Transportation Detail

Level: Detail -- Shipment

Loop: HL

Usage: Optional

Max Use: 1

Purpose: To specify information relating to premium transportation

Syntax: 1 P0304 - If either ETD03 or ETD04 is present, then the other is required.

Semantic: 1 ETD03 qualifies the authorization number given in EDT04.

Data Element Summary

	REF. DES.	DATA ELE.	NAME	ATTRIBUTES		
	ETD01	626	Excess Transportation Reason Code	M	ID	1/2
			Code identifying the reason for shipment via premium transportation rather than the normal mode of transportation			
			Any valid X12 code value except mutually defined; 'ZZ'			
	ETD02	627	Excess Transportation Responsibility Code	M	ID	1/1
			Code identifying the organization responsible for paying the premium transportation costs			
			CODE	DEFINITION		
			A	Customer Plant (Receiving Location)		
			S	Supplier Authority		
Required	ETD03	128	Reference Identification Qualifier	X	ID	2/3
			Code qualifying the Reference Identification			
			CODE	DEFINITION		
			AE	Authorization for Expense (AFE) Number		
Required	ETD04	127	Reference Identification	X	AN	1/30
			Reference information as defined for a particular Transaction Set or as specified by the Reference Identification Qualifier			
Not Used	ETD05	743	Returnable Container Freight Payment Responsibility Code	O	ID	1/2
			Code specifying the responsibility for the return freight costs incurred when returnable containers are shipped in a premium transportation			

Segment: CUR Currency**Level:** Detail -- Shipment**Loop:** HL**Usage:** Optional**Max Use:** 1**Purpose:** To specify the currency (dollars, pounds, francs, etc.) used in a transaction

- Syntax:**
- 1 C0807 - If CUR08 is present, then CUR07 is required.
 - 2 C0907 - If CUR09 is present, then CUR07 is required.
 - 3 L101112 - If CUR10 is present, then at least one of CUR11 or CUR12 is required.
 - 4 C1110 - If CUR11 is present, then CUR10 is required.
 - 5 C1210 - If CUR12 is present, then CUR10 is required.
 - 6 L131415 - If CUR13 is present, then at least one of CUR14 or CUR15 is required.
 - 7 C1413 - If CUR14 is present, then CUR13 is required.
 - 8 C1513 - If CUR15 is present, then CUR13 is required.
 - 9 L161718 - If CUR16 is present, then at least one of CUR17 or CUR18 is required.
 - 10 C1716 - If CUR17 is present, then CUR16 is required.
 - 11 C1816 - If CUR18 is present, then CUR16 is required.
 - 12 L192021 - If CUR19 is present, then at least one of CUR20 or CUR21 is required.
 - 13 C2019 - If CUR20 is present, then CUR19 is required.
 - 14 C2119 - If CUR21 is present, then CUR19 is required.

Notes: This applies to all financial amounts in this transaction set.**Data Element Summary**

REF. DES.	DATA ELE.	NAME	ATTRIBUTES
CUR01	98	Entity Identifier Code Code identifying an organizational entity, a physical location, property or an individual Any valid X12 code value except mutually defined; 'ZZ'	M ID 2/3
CUR02	100	Currency Code Code (Standard ISO) for country in whose currency the charges are specified	M ID 3/3
Not Used	CUR03 280	Exchange Rate Value to be used as a multiplier conversion factor to convert monetary value from one currency to another	O R 4/10
Not Used	CUR04 98	Entity Identifier Code Code identifying an organizational entity, a physical location, property or an individual	O ID 2/3
Not Used	CUR05 100	Currency Code Code (Standard ISO) for country in whose currency the charges are specified	O ID 3/3
Not Used	CUR06 669	Currency Market/Exchange Code Code identifying the market upon which the currency exchange rate is based	O ID 3/3
Not Used	CUR07 374	Date/Time Qualifier Code specifying type of date or time, or both date and time	X ID 3/3
Not Used	CUR08 373	Date Date expressed as CCYYMMDD	O DT 8/8

Data Element Summary

Not Used

REF. DES.	DATA ELE.	NAME	ATTRIBUTES
CUR09	337	Time	O TM 4/8

Time expressed in 24-hour clock time as follows: HHMM, or HHMMSS, or HHMMSSD, or HHMMSSDD, where H = hours (00-23), M = minutes (00-59), S = integer seconds (00-59) and DD = decimal seconds; decimal seconds are expressed as follows: D = tenths (0-9) and DD = hundredths (00-99)

CUR10 through CUR21 provide for 4 additional sets of data elements 374, 373 and 337 which are not used by AIAG.

Segment: SAC Service, Promotion, Allowance, or Charge Information

Level: Detail -- Shipment

Loop: HL/SAC **Repeat:** >1

Usage: Optional

Max Use: 1

Purpose: To request or identify a service, promotion, allowance, or charge; to specify the amount or percentage for the service, promotion, allowance, or charge

- Syntax:**
- 1 R0203 - At least one of SAC02 or SAC03 is required.
 - 2 P0304 - If either SAC03 or SAC04 is present, then the other is required.
 - 3 P0607 - If either SAC06 or SAC07 is present, then the other is required.
 - 4 P0910 - If either SAC09 or SAC10 is present, then the other is required.
 - 5 C1110 - If SAC11 is present, then SAC10 is required.
 - 6 L130204 - If SAC13 is present, then at least one of SAC02 or SAC04 is required.
 - 7 C1413 - If SAC14 is present, then SAC13 is required.
 - 8 C1615 - If SAC16 is present, then SAC15 is required.

- Semantic:**
- 1 If SAC01 is "A" or "C", then at least one of SAC05, SAC07, or SAC08 is required.
 - 2 SAC05 is the total amount for the service, promotion, allowance, or charge.
 - 3 If SAC05 is present with SAC07 or SAC08, then SAC05 takes precedence.
 - 4 SAC08 is the allowance or charge rate per unit.
 - 5 SAC10 and SAC11 is the quantity basis when the allowance or charge quantity is different from the purchase order or invoice quantity.
 - 6 SAC10 and SAC11 used together indicate a quantity range, which could be a dollar amount, that is applicable to service, promotion, allowance, or charge.
 - 7 SAC13 is used in conjunction with SAC02 or SAC04 to provide a specific reference number as identified by the code used.
 - 8 SAC14 is used in conjunction with SAC13 to identify an option when there is more than one option of the promotion.
 - 9 SAC16 is used to identify the language being used in SAC15.
- Comments:**
- A** SAC04 may be used to uniquely identify the service, promotion, allowance, or charge. In addition, it may be used in conjunction to further the code in SAC02.
- B** In some business applications, it is necessary to advise the trading partner of the actual dollar amount that a particular allowance, charge, or promotion was based on to reduce ambiguity. This amount is commonly referred to as "Dollar Basis Amount". It is represented in the SAC segment in SAC10 using the qualifier "DO" - Dollars in SAC09.

Data Element Summary

REF. DES.	DATA ELE.	NAME	ATTRIBUTES
SAC01	248	Allowance or Charge Indicator	M ID 1/1
		Code which indicates an allowance or charge for the service specified	
		CODE DEFINITION	
		C Charge	
SAC02	1300	Service, Promotion, Allowance, or Charge Code	X ID 4/4
		Code identifying the service, promotion, allowance, or charge	
		CODE DEFINITION	
		D240 Freight	
		D500 Handling	
		F180 Pallet	

Data Element Summary

	REF. DES.	DATA ELE.	NAME		ATTRIBUTES		
			CODE	DEFINITION			
			G760	Set-up			
			H550	Surcharge			
			I260	Transportation Direct Billing			
			I280	Transportation Vendor Provided			
Not Used	SAC03	559	Agency Qualifier Code		X	ID	2/2
			Code identifying the agency assigning the code values				
Not Used	SAC04	1301	Agency Service, Promotion, Allowance, or Charge Code		X	AN	1/10
			Agency maintained code identifying the service, promotion, allowance, or charge				
	SAC05	610	Amount		O	N2	1/15
			Monetary amount				
Not Used	SAC06	378	Allowance/Charge Percent Qualifier		X	ID	1/1
			Code indicating on what basis allowance or charge percent is calculated				
Not Used	SAC07	332	Percent		X	R	1/6
			Percent expressed as a percent				
Not Used	SAC08	118	Rate		O	R	1/9
			Rate expressed in the standard monetary denomination for the currency specified				
Not Used	SAC09	355	Unit or Basis for Measurement Code		X	ID	2/2
			Code specifying the units in which a value is being expressed, or manner in which a measurement has been taken				
Not Used	SAC10	380	Quantity		X	R	1/15
			Numeric value of quantity				
Not Used	SAC11	380	Quantity		O	R	1/15
			Numeric value of quantity				
	SAC12	331	Allowance or Charge Method of Handling Code		O	ID	2/2
			Code indicating method of handling for an allowance or charge				
			CODE	DEFINITION			
			06	Charge to be Paid by Customer			
Not Used	SAC13	127	Reference Identification		X	AN	1/30
			Reference information as defined for a particular Transaction Set or as specified by the Reference Identification Qualifier				
Not Used	SAC14	770	Option Number		O	AN	1/20
			A unique number identifying available promotion or allowance options when more than one is offered				
Not Used	SAC15	352	Description		X	AN	1/80
			A free-form description to clarify the related data elements and their content				
Not Used	SAC16	819	Language Code		O	ID	2/3
			Code designating the language used in text, from a standard code list maintained by the International Standards Organization (ISO 639)				

Segment: V1 Vessel Identification

Level: Detail -- Shipment

Loop: HL/V1 **Repeat:** >1

Usage: Optional

Max Use: 1

Purpose: To provide vessel details and voyage number

Syntax: 1 R0102 - At least one of V101 or V102 is required.

2 C0801 - If V108 is present, then V101 is required.

Semantic: 1 V103 is the code identifying the country in which the ship (vessel) is registered.

2 V105 identifies the ocean carrier.

Data Element Summary

REF. DES.	DATA ELE.	NAME	ATTRIBUTES
V101	597	Vessel Code Code identifying vessel	X ID 1/8
V102	182	Vessel Name Name of ship as documented in "Lloyd's Register of Ships"	X AN 2/28
V103	26	Country Code Code identifying the country	O ID 2/3
V104	55	Flight/Voyage Number Identifying designator for the particular flight or voyage on which the cargo travels	O AN 2/10
V105	140	Standard Carrier Alpha Code Standard Carrier Alpha Code	O ID 2/4
V106	249	Vessel Requirement Code Code specifying options for satisfying vessel requirements	O ID 1/1
V107	854	Vessel Type Code Code to determine type of vessel	O ID 2/2
V108	897	Vessel Code Qualifier Code specifying vessel code source	O ID 1/1
V109	91	Transportation Method/Type Code Code specifying the method or type of transportation for the shipment	O ID 1/2

Segment: R4 Port or Terminal

Level: Detail -- Shipment

Loop: HL/V1

Usage: Optional

Max Use: >1

Purpose: Contractual or operational port or point relevant to the movement of the cargo

Syntax: 1 P0203 - If either R402 or R403 is present, then the other is required.

Comments: A R4 is required for each port to be identified.

Data Element Summary

REF. DES.	DATA ELE.	NAME	ATTRIBUTES		
R401	115	Port or Terminal Function Code Code defining function performed at the port or terminal with respect to a shipment	M	ID	1/1
R402	309	Location Qualifier Code identifying type of location	X	ID	1/2
R403	310	Location Identifier Code which identifies a specific location	X	AN	1/30
R404	114	Port Name Free-form name for the place at which an offshore carrier originates or terminates (by transshipment or otherwise) its actual ocean carriage of property	O	AN	2/24
R405	26	Country Code Code identifying the country	O	ID	2/3
R406	174	Terminal Name Free-form field for terminal name	O	AN	2/30
R407	113	Pier Number Identifying number for the pier	O	AN	1/4
R408	156	State or Province Code Code (Standard State/Province) as defined by appropriate government agency	O	ID	2/2

Segment: DTM Date/Time Reference

Level: Detail -- Shipment

Loop: HL/V1

Usage: Optional

Max Use: >1

Purpose: To specify pertinent dates and times

- Syntax:**
- 1 R020305 - At least one of DTM02, DTM03 or DTM05 is required.
 - 2 C0403 - If DTM04 is present, then DTM03 is required.
 - 3 P0506 - If either DTM05 or DTM06 is present, then the other is required.

Data Element Summary

	REF. DES.	DATA ELE.	NAME	ATTRIBUTES		
	DTM01	374	Date/Time Qualifier Code specifying type of date or time, or both date and time One DTM segment with a code value of "011" is required.	M	ID	3/3
			CODE	DEFINITION		
			011	Shipped		
			017	Estimated Delivery		
Required	DTM02	373	Date Date expressed as CCYYMMDD	X	DT	8/8
Required	DTM03	337	Time Time expressed in 24-hour clock time as follows: HHMM, or HHMMSS, or HHMMSSD, or HHMMSSDD, where H = hours (00-23), M = minutes (00-59), S = integer seconds (00-59) and DD = decimal seconds; decimal seconds are expressed as follows: D = tenths (0-9) and DD = hundredths (00-99)	X	TM	4/8
Required	DTM04	623	Time Code Code identifying the time. In accordance with International Standards Organization standard 8601, time can be specified by a + or - and an indication in hours in relation to Universal Time Coordinate (UTC) time; since + is a restricted character, + and - are substituted by P and M in the codes that follow Any valid X12 code value except mutually defined.	O	ID	2/2
Not Used	DTM05	1250	Date Time Period Format Qualifier Code indicating the date format, time format, or date and time format	X	ID	2/3
Not Used	DTM06	1251	Date Time Period Expression of a date, a time, or range of dates, times or dates and times	X	AN	1/35

Segment: HL Hierarchical Level

Level: Detail -- Order

Loop: HL **Repeat:** 200000

Usage: Mandatory

Max Use: 1

Purpose: To identify dependencies among and the content of hierarchically related groups of data segments

Set Notes: 1 Number of line items (CTT01) is the accumulation of the number of HL segments. If used, hash total (CTT02) is the sum of the value of units shipped (SN102) for each SN1 segment.

Comments: A The HL segment is used to identify levels of detail information using a hierarchical structure, such as relating line-item data to shipment data, and packaging data to line-item data.

B The HL segment defines a top-down/left-right ordered structure.

C HL01 shall contain a unique alphanumeric number for each occurrence of the HL segment in the transaction set. For example, HL01 could be used to indicate the number of occurrences of the HL segment, in which case the value of HL01 would be "1" for the initial HL segment and would be incremented by one in each subsequent HL segment within the transaction.

D HL02 identifies the hierarchical ID number of the HL segment to which the current HL segment is subordinate.

E HL03 indicates the context of the series of segments following the current HL segment up to the next occurrence of an HL segment in the transaction. For example, HL03 is used to indicate that subsequent segments in the HL loop form a logical grouping of data referring to shipment, order, or item-level information.

F HL04 indicates whether or not there are subordinate (or child) HL segments related to the current HL segment.

Data Element Summary

REF. DES.	DATA ELE.	NAME	ATTRIBUTES
HL01	628	Hierarchical ID Number	M AN 1/12
		A unique number assigned by the sender to identify a particular data segment in a hierarchical structure	
		"1" is used for the shipment level HL segment. Increment by 1 for each subsequent HL segment within the transaction.	
HL02	734	Hierarchical Parent ID Number	O AN 1/12
		Identification number of the next higher hierarchical data segment that the data segment being described is subordinate to	
HL03	735	Hierarchical Level Code	M ID 1/2
		Code defining the characteristic of a level in a hierarchical structure	
		CODE	DEFINITION
		O	Order
HL04	736	Hierarchical Child Code	O ID 1/1
		Code indicating if there are hierarchical child data segments subordinate to the level being described	

Required

Segment: LIN Item Identification

Level: Detail -- Order

Loop: HL

Usage: Optional

Max Use: 1

Purpose: To specify basic item identification data

- Syntax:**
- 1 P0405 - If either LIN04 or LIN05 is present, then the other is required.
 - 2 P0607 - If either LIN06 or LIN07 is present, then the other is required.
 - 3 P0809 - If either LIN08 or LIN09 is present, then the other is required.
 - 4 P1011 - If either LIN10 or LIN11 is present, then the other is required.
 - 5 P1213 - If either LIN12 or LIN13 is present, then the other is required.
 - 6 P1415 - If either LIN14 or LIN15 is present, then the other is required.
 - 7 P1617 - If either LIN16 or LIN17 is present, then the other is required.
 - 8 P1819 - If either LIN18 or LIN19 is present, then the other is required.
 - 9 P2021 - If either LIN20 or LIN21 is present, then the other is required.
 - 10 P2223 - If either LIN22 or LIN23 is present, then the other is required.
 - 11 P2425 - If either LIN24 or LIN25 is present, then the other is required.
 - 12 P2627 - If either LIN26 or LIN27 is present, then the other is required.
 - 13 P2829 - If either LIN28 or LIN29 is present, then the other is required.
 - 14 P3031 - If either LIN30 or LIN31 is present, then the other is required.

Semantic: 1 LIN01 is the line item identification

Comments: A See the Data Dictionary for a complete list of IDs.

B LIN02 through LIN31 provide for fifteen different product/service IDs for each item. For example: Case, Color, Drawing No., U.P.C. No., ISBN No., Model No., or SKU.

Data Element Summary

Not Used

REF. DES.	DATA ELE.	NAME	ATTRIBUTES
LIN01	350	Assigned Identification Alphanumeric characters assigned for differentiation within a transaction set	O AN 1/20
LIN02	235	Product/Service ID Qualifier Code identifying the type/source of the descriptive number used in Product/Service ID (234)	M ID 2/2
		CODE DEFINITION	
		BP Buyer's Part Number If a Buyer's Part Number (BP) is not available, then select a qualifier from the codes listed under the LIN04 to identify the item.	
LIN03	234	Product/Service ID Identifying number for a product or service	M AN 1/48
LIN04	235	Product/Service ID Qualifier Code identifying the type/source of the descriptive number used in Product/Service ID (234)	X ID 2/2
		CODE DEFINITION	
		CH Country of Origin Code SEE CODE SOURCE 5 IN X12 STANDARDS	
		DR Drawing Revision Number	
		EC Engineering Change Level	
		PO Purchase Order Number	

Data Element Summary

REF. DES.	DATA ELE.	NAME		ATTRIBUTES
		CODE	DEFINITION	
		RC	Returnable Container Number	
		VO	Vendor's Order Number	
		VP	Vendor's (Seller's) Part Number	
LIN05	234	Product/Service ID		X AN 1/48
		Identifying number for a product or service		
		LIN06 through LIN31 provide for 13 additional pairs of data elements 235 and 234.		

Segment: SN1 Item Detail (Shipment)

Level: Detail -- Order

Loop: HL

Usage: Optional

Max Use: 1

Purpose: To specify line-item detail relative to shipment

Syntax: 1 P0506 - If either SN105 or SN106 is present, then the other is required.

Semantic: 1 SN101 is the ship notice line-item identification.

Comments: A SN103 defines the unit of measurement for both SN102 and SN104.

Notes: Used to show the net quantity being shipped, the unit of measure and cumulative year-to-date shipments if applicable.

Data Element Summary

	REF. DES.	DATA ELE.	NAME	ATTRIBUTES		
Not Used	SN101	350	Assigned Identification Alphanumeric characters assigned for differentiation within a transaction set	O	AN	1/20
	SN102	382	Number of Units Shipped Numeric value of units shipped in manufacturer's shipping units for a line item or transaction set	M	R	1/10
	SN103	355	Unit or Basis for Measurement Code Code specifying the units in which a value is being expressed, or manner in which a measurement has been taken This must be the same Unit of Measure provided on the corresponding releasing document.	M	ID	2/2
	SN104	646	Quantity Shipped to Date Number of units shipped to date	O	R	1/15
	SN105	330	Quantity Ordered Quantity ordered	X	R	1/15
	SN106	355	Unit or Basis for Measurement Code Code specifying the units in which a value is being expressed, or manner in which a measurement has been taken	X	ID	2/2
Not Used	SN107	728	Returnable Container Load Make-Up Code Code identifying the load make-up of the returnable containers in the shipment	O	ID	1/2
Not Used	SN108	668	Line Item Status Code Code specifying the action taken by the seller on a line item requested by the buyer	O	ID	2/2

Segment: **PRF** Purchase Order Reference

Level: Detail -- Order

Loop: HL

Usage: Optional

Max Use: 1

Purpose: To provide reference to a specific purchase order

Semantic: 1 PRF04 is the date assigned by the purchaser to purchase order.

Data Element Summary

REF. DES.	DATA ELE.	NAME	ATTRIBUTES
PRF01	324	Purchase Order Number Identifying number for Purchase Order assigned by the orderer/purchaser Use PO number provided in releasing documents (e.g., 830, 850, 862, 866).	M AN 1/22
PRF02	328	Release Number Number identifying a release against a Purchase Order previously placed by the parties involved in the transaction	O AN 1/30
Not Used	PRF03 327	Change Order Sequence Number Number assigned by the orderer identifying a specific change or revision to a previously transmitted transaction set	O AN 1/8
	PRF04 373	Date Date expressed as CCYYMMDD	O DT 8/8
	PRF05 350	Assigned Identification Alphanumeric characters assigned for differentiation within a transaction set	O AN 1/20
	PRF06 367	Contract Number Contract number	O AN 1/30
Not Used	PRF07 92	Purchase Order Type Code Code specifying the type of Purchase Order	O ID 2/2

Segment: REF Reference Identification

Level: Detail -- Order

Loop: HL

Usage: Optional

Max Use: >1

Purpose: To specify identifying information

Syntax: 1 R0203 - At least one of REF02 or REF03 is required.

Semantic: 1 REF04 contains data relating to the value cited in REF02.

Data Element Summary

	REF. DES.	DATA ELE.	NAME		ATTRIBUTES		
			CODE	DEFINITION			
	REF01	128	Reference Identification Qualifier		M	ID	2/3
			Code qualifying the Reference Identification				
			BM	Bill of Lading Number			
			PK	Packing List Number			
Required	REF02	127	Reference Identification		X	AN	1/30
			Reference information as defined for a particular Transaction Set or as specified by the Reference Identification Qualifier				
Not Used	REF03	352	Description		X	AN	1/80
			A free-form description to clarify the related data elements and their content				
Not Used	REF04	C040	Reference Identifier		O		
			To identify one or more reference numbers or identification numbers as specified by the Reference Qualifier				

Segment: CLD Load Detail

Level: Detail -- Order

Loop: HL/CLD **Repeat:** 200

Usage: Optional

Max Use: 1

Purpose: To specify the number of material loads shipped

Syntax: 1 C0504 - If CLD05 is present, then CLD04 is required.

Semantic: 1 CLD05 is used to dimension the value given in CLD04.

Comments: A The CLD data segment may be used to provide information to aid in the preparation of move tags and/or bar coded labels.

Notes: This segment is used by the supplier to inform the customer about the number of customer material loads shipped (e.g., pallets), and the quantity per load. The customer will use this information to prepare more tags and/or bar-coded labels to aid in moving material.

Data Element Summary

REF. DES.	DATA ELE.	NAME	ATTRIBUTES
CLD01	622	Number of Loads Number of customer-defined loads shipped by the supplier	M NO 1/5
CLD02	382	Number of Units Shipped Numeric value of units shipped in manufacturer's shipping units for a line item or transaction set Total quantity per container.	M R 1/10
CLD03	103	Packaging Code Code identifying the type of packaging; Part 1: Packaging Form, Part 2: Packaging Material; if the Data Element is used, then Part 1 is always required	O AN 3/5
Not Used	CLD04	357 Size Size of supplier units in pack	X R 1/8
Not Used	CLD05	355 Unit or Basis for Measurement Code Code specifying the units in which a value is being expressed, or manner in which a measurement has been taken	O ID 2/2

Segment: REF Reference Identification

Level: Detail -- Order

Loop: HL/CLD

Usage: Optional

Max Use: 200

Purpose: To specify identifying information

Syntax: 1 R0203 - At least one of REF02 or REF03 is required.

Semantic: 1 REF04 contains data relating to the value cited in REF02.

Data Element Summary

REF. DES.	DATA ELE.	NAME	ATTRIBUTES
REF01	128	Reference Identification Qualifier Code qualifying the Reference Identification	M ID 2/3
		CODE DEFINITION	
		LS Bar-Coded Serial Number	
REF02	127	Reference Identification Reference information as defined for a particular Transaction Set or as specified by the Reference Identification Qualifier	X AN 1/30
REF03	352	Description A free-form description to clarify the related data elements and their content	X AN 1/80
REF04	C040	Reference Identifier To identify one or more reference numbers or identification numbers as specified by the Reference Qualifier	O

Not Used

Segment: N1 Name

Level: Detail -- Order

Loop: HL/N1 **Repeat:** 200

Usage: Optional

Max Use: 1

Purpose: To identify a party by type of organization, name, and code

Syntax: 1 R0203 - At least one of N102 or N103 is required.

2 P0304 - If either N103 or N104 is present, then the other is required.

Comments: A This segment, used alone, provides the most efficient method of providing organizational identification. To obtain this efficiency the "ID Code" (N104) must provide a key to the table maintained by the transaction processing party.

B N105 and N106 further define the type of entity in N101.

Notes: At a minimum the supplier ship-from and customer ship-to locations must be identified. The ship-from is always in the shipment level, but the ship-to could be in the item level if shipping to multiple locations. Code value "SF" is used only by consolidators to identify original supplier ship-from code.

Data Element Summary

REF. DES.	DATA ELE.	NAME	ATTRIBUTES
N101	98	Entity Identifier Code Code identifying an organizational entity, a physical location, property or an individual	M ID 2/3
		CODE DEFINITION	
		SF Ship From	
		ST Ship To	
		SU Supplier/Manufacturer	
N102	93	Name Free-form name	X AN 1/60
Required	N103	Identification Code Qualifier Code designating the system/method of code structure used for Identification Code (67)	X ID 1/2
		CODE DEFINITION	
		1 D-U-N-S Number, Dun & Bradstreet SEE CODE SOURCE 16 IN X12 STANDARDS	
Required	N104	Identification Code Code identifying a party or other code Suppress internal dashes and spaces.	X AN 2/80
Not Used	N105	Entity Relationship Code Code describing entity relationship	O ID 2/2
Not Used	N106	Entity Identifier Code Code identifying an organizational entity, a physical location, property or an individual	O ID 2/3

Segment: REF Reference Identification

Level: Detail -- Order

Loop: HL/N1

Usage: Optional

Max Use: 12

Purpose: To specify identifying information

Syntax: 1 R0203 - At least one of REF02 or REF03 is required.

Semantic: 1 REF04 contains data relating to the value cited in REF02.

Data Element Summary

	REF. DES.	DATA ELE.	NAME		ATTRIBUTES		
			CODE	DEFINITION			
	REF01	128	Reference Identification Qualifier		M	ID	2/3
			Code qualifying the Reference Identification				
			DK	Dock Number			
			LF	Assembly Line Feed Location			
			RL	Reserve Assembly Line Feed Location			
Required	REF02	127	Reference Identification		X	AN	1/30
			Reference information as defined for a particular Transaction Set or as specified by the Reference Identification Qualifier				
Not Used	REF03	352	Description		X	AN	1/80
			A free-form description to clarify the related data elements and their content				
Not Used	REF04	C040	Reference Identifier		O		
			To identify one or more reference numbers or identification numbers as specified by the Reference Qualifier				

Segment: ETD Excess Transportation Detail

Level: Detail -- Order

Loop: HL

Usage: Optional

Max Use: 1

Purpose: To specify information relating to premium transportation

Syntax: 1 P0304 - If either ETD03 or ETD04 is present, then the other is required.

Semantic: 1 ETD03 qualifies the authorization number given in EDT04.

Notes: This segment is required if the material is being shipped via premium transportation (other than normal mode).

Data Element Summary

REF. DES.	DATA ELE.	NAME	ATTRIBUTES								
ETD01	626	Excess Transportation Reason Code Code identifying the reason for shipment via premium transportation rather than the normal mode of transportation Any valid X12 code value except mutually defined; 'ZZ'	M	ID	1/2						
ETD02	627	Excess Transportation Responsibility Code Code identifying the organization responsible for paying the premium transportation costs <table><tr><th>CODE</th><th>DEFINITION</th></tr><tr><td>A</td><td>Customer Plant (Receiving Location)</td></tr><tr><td>S</td><td>Supplier Authority</td></tr></table>	CODE	DEFINITION	A	Customer Plant (Receiving Location)	S	Supplier Authority	M	ID	1/1
CODE	DEFINITION										
A	Customer Plant (Receiving Location)										
S	Supplier Authority										
Required	ETD03	128 Reference Identification Qualifier Code qualifying the Reference Identification <table><tr><th>CODE</th><th>DEFINITION</th></tr><tr><td>AE</td><td>Authorization for Expense (AFE) Number</td></tr></table>	CODE	DEFINITION	AE	Authorization for Expense (AFE) Number	X	ID	2/3		
CODE	DEFINITION										
AE	Authorization for Expense (AFE) Number										
Required	ETD04	127 Reference Identification Reference information as defined for a particular Transaction Set or as specified by the Reference Identification Qualifier	X	AN	1/30						
Not Used	ETD05	743 Returnable Container Freight Payment Responsibility Code Code specifying the responsibility for the return freight costs incurred when returnable containers are shipped in a premium transportation	O	ID	1/2						

Segment: SAC Service, Promotion, Allowance, or Charge Information

Level: Detail -- Order

Loop: HL/SAC **Repeat:** >1

Usage: Optional

Max Use: 1

Purpose: To request or identify a service, promotion, allowance, or charge; to specify the amount or percentage for the service, promotion, allowance, or charge

- Syntax:**
- 1 R0203 - At least one of SAC02 or SAC03 is required.
 - 2 P0304 - If either SAC03 or SAC04 is present, then the other is required.
 - 3 P0607 - If either SAC06 or SAC07 is present, then the other is required.
 - 4 P0910 - If either SAC09 or SAC10 is present, then the other is required.
 - 5 C1110 - If SAC11 is present, then SAC10 is required.
 - 6 L130204 - If SAC13 is present, then at least one of SAC02 or SAC04 is required.
 - 7 C1413 - If SAC14 is present, then SAC13 is required.
 - 8 C1615 - If SAC16 is present, then SAC15 is required.

- Semantic:**
- 1 If SAC01 is "A" or "C", then at least one of SAC05, SAC07, or SAC08 is required.
 - 2 SAC05 is the total amount for the service, promotion, allowance, or charge.
 - 3 If SAC05 is present with SAC07 or SAC08, then SAC05 takes precedence.
 - 4 SAC08 is the allowance or charge rate per unit.
 - 5 SAC10 and SAC11 is the quantity basis when the allowance or charge quantity is different from the purchase order or invoice quantity.
 - 6 SAC10 and SAC11 used together indicate a quantity range, which could be a dollar amount, that is applicable to service, promotion, allowance, or charge.
 - 7 SAC13 is used in conjunction with SAC02 or SAC04 to provide a specific reference number as identified by the code used.
 - 8 SAC14 is used in conjunction with SAC13 to identify an option when there is more than one option of the promotion.
 - 9 SAC16 is used to identify the language being used in SAC15.
- Comments:**
- A** SAC04 may be used to uniquely identify the service, promotion, allowance, or charge. In addition, it may be used in conjunction to further the code in SAC02.
- B** In some business applications, it is necessary to advise the trading partner of the actual dollar amount that a particular allowance, charge, or promotion was based on to reduce ambiguity. This amount is commonly referred to as "Dollar Basis Amount". It is represented in the SAC segment in SAC10 using the qualifier "DO" - Dollars in SAC09.

Data Element Summary

REF. DES.	DATA ELE.	NAME	ATTRIBUTES
SAC01	248	Allowance or Charge Indicator Code which indicates an allowance or charge for the service specified	M ID 1/1
		CODE DEFINITION	
		A Allowance	
		C Charge	
		N No Allowance or Charge	
SAC02	1300	Service, Promotion, Allowance, or Charge Code Code identifying the service, promotion, allowance, or charge	X ID 4/4
Not Used	SAC03 559	Agency Qualifier Code Code identifying the agency assigning the code values	X ID 2/2

Data Element Summary

	REF. DES.	DATA ELE.	NAME	ATTRIBUTES		
Not Used	SAC04	1301	Agency Service, Promotion, Allowance, or Charge Code Agency maintained code identifying the service, promotion, allowance, or charge	X	AN	1/10
	SAC05	610	Amount Monetary amount	O	N2	1/15
	SAC06	378	Allowance/Charge Percent Qualifier Code indicating on what basis allowance or charge percent is calculated	X	ID	1/1
Not Used	SAC07	332	Percent Percent expressed as a percent	X	R	1/6
Not Used	SAC08	118	Rate Rate expressed in the standard monetary denomination for the currency specified	O	R	1/9
Not Used	SAC09	355	Unit or Basis for Measurement Code Code specifying the units in which a value is being expressed, or manner in which a measurement has been taken	X	ID	2/2
Not Used	SAC10	380	Quantity Numeric value of quantity	X	R	1/15
Not Used	SAC11	380	Quantity Numeric value of quantity	O	R	1/15
	SAC12	331	Allowance or Charge Method of Handling Code Code indicating method of handling for an allowance or charge	O	ID	2/2
Not Used	SAC13	127	Reference Identification Reference information as defined for a particular Transaction Set or as specified by the Reference Identification Qualifier	X	AN	1/30
Not Used	SAC14	770	Option Number A unique number identifying available promotion or allowance options when more than one is offered	O	AN	1/20
Not Used	SAC15	352	Description A free-form description to clarify the related data elements and their content	X	AN	1/80
Not Used	SAC16	819	Language Code Code designating the language used in text, from a standard code list maintained by the International Standards Organization (ISO 639)	O	ID	2/3

Segment: V1 Vessel Identification

Level: Detail -- Order

Loop: HL/V1 **Repeat:** >1

Usage: Optional

Max Use: 1

Purpose: To provide vessel details and voyage number

Syntax: 1 R0102 - At least one of V101 or V102 is required.

2 C0801 - If V108 is present, then V101 is required.

Semantic: 1 V103 is the code identifying the country in which the ship (vessel) is registered.

2 V105 identifies the ocean carrier.

Data Element Summary

REF. DES.	DATA ELE.	NAME	ATTRIBUTES
V101	597	Vessel Code Code identifying vessel	X ID 1/8
V102	182	Vessel Name Name of ship as documented in "Lloyd's Register of Ships"	X AN 2/28
V103	26	Country Code Code identifying the country	O ID 2/3
V104	55	Flight/Voyage Number Identifying designator for the particular flight or voyage on which the cargo travels	O AN 2/10
V105	140	Standard Carrier Alpha Code Standard Carrier Alpha Code	O ID 2/4
V106	249	Vessel Requirement Code Code specifying options for satisfying vessel requirements	O ID 1/1
V107	854	Vessel Type Code Code to determine type of vessel	O ID 2/2
V108	897	Vessel Code Qualifier Code specifying vessel code source	O ID 1/1
V109	91	Transportation Method/Type Code Code specifying the method or type of transportation for the shipment	O ID 1/2

Segment: R4 Port or Terminal

Level: Detail -- Order

Loop: HL/V1

Usage: Optional

Max Use: >1

Purpose: Contractual or operational port or point relevant to the movement of the cargo

Syntax: 1 P0203 - If either R402 or R403 is present, then the other is required.

Comments: A R4 is required for each port to be identified.

Data Element Summary

REF. DES.	DATA ELE.	NAME	ATTRIBUTES
R401	115	Port or Terminal Function Code Code defining function performed at the port or terminal with respect to a shipment	M ID 1/1
R402	309	Location Qualifier Code identifying type of location	X ID 1/2
R403	310	Location Identifier Code which identifies a specific location	X AN 1/30
R404	114	Port Name Free-form name for the place at which an offshore carrier originates or terminates (by transshipment or otherwise) its actual ocean carriage of property	O AN 2/24
R405	26	Country Code Code identifying the country	O ID 2/3
R406	174	Terminal Name Free-form field for terminal name	O AN 2/30
R407	113	Pier Number Identifying number for the pier	O AN 1/4
R408	156	State or Province Code Code (Standard State/Province) as defined by appropriate government agency	O ID 2/2

Segment: DTM Date/Time Reference

Level: Detail -- Order

Loop: HL/V1

Usage: Optional

Max Use: >1

Purpose: To specify pertinent dates and times

- Syntax:**
- 1 R020305 - At least one of DTM02, DTM03 or DTM05 is required.
 - 2 C0403 - If DTM04 is present, then DTM03 is required.
 - 3 P0506 - If either DTM05 or DTM06 is present, then the other is required.

Data Element Summary

REF. DES.	DATA ELE.	NAME	ATTRIBUTES		
DTM01	374	Date/Time Qualifier Code specifying type of date or time, or both date and time	M	ID	3/3
DTM02	373	Date Date expressed as CCYYMMDD	X	DT	8/8
DTM03	337	Time Time expressed in 24-hour clock time as follows: HHMM, or HHMMSS, or HHMMSSD, or HHMMSSDD, where H = hours (00-23), M = minutes (00-59), S = integer seconds (00-59) and DD = decimal seconds; decimal seconds are expressed as follows: D = tenths (0-9) and DD = hundredths (00-99)	X	TM	4/8
DTM04	623	Time Code Code identifying the time. In accordance with International Standards Organization standard 8601, time can be specified by a + or - and an indication in hours in relation to Universal Time Coordinate (UTC) time; since + is a restricted character, + and - are substituted by P and M in the codes that follow	O	ID	2/2
DTM05	1250	Date Time Period Format Qualifier Code indicating the date format, time format, or date and time format	X	ID	2/3
DTM06	1251	Date Time Period Expression of a date, a time, or range of dates, times or dates and times	X	AN	1/35

Segment: HL Hierarchical Level

Level: Detail -- Item

Loop: HL **Repeat:** 200000

Usage: Mandatory

Max Use: 1

Purpose: To identify dependencies among and the content of hierarchically related groups of data segments

- Comments:**
- A** The HL segment is used to identify levels of detail information using a hierarchical structure, such as relating line-item data to shipment data, and packaging data to line-item data.
 - B** The HL segment defines a top-down/left-right ordered structure.
 - C** HL01 shall contain a unique alphanumeric number for each occurrence of the HL segment in the transaction set. For example, HL01 could be used to indicate the number of occurrences of the HL segment, in which case the value of HL01 would be "1" for the initial HL segment and would be incremented by one in each subsequent HL segment within the transaction.
 - D** HL02 identifies the hierarchical ID number of the HL segment to which the current HL segment is subordinate.
 - E** HL03 indicates the context of the series of segments following the current HL segment up to the next occurrence of an HL segment in the transaction. For example, HL03 is used to indicate that subsequent segments in the HL loop form a logical grouping of data referring to shipment, order, or item-level information.
 - F** HL04 indicates whether or not there are subordinate (or child) HL segments related to the current HL segment.

Data Element Summary

REF. DES.	DATA ELE.	NAME	ATTRIBUTES				
HL01	628	Hierarchical ID Number A unique number assigned by the sender to identify a particular data segment in a hierarchical structure "1" is used for the shipment level HL segment. Increment by 1 for each subsequent HL segment within the transaction.	M AN 1/12				
HL02	734	Hierarchical Parent ID Number Identification number of the next higher hierarchical data segment that the data segment being described is subordinate to	O AN 1/12				
HL03	735	Hierarchical Level Code Code defining the characteristic of a level in a hierarchical structure <table><tr><th>CODE</th><th>DEFINITION</th></tr><tr><td>I</td><td>Item</td></tr></table>	CODE	DEFINITION	I	Item	M ID 1/2
CODE	DEFINITION						
I	Item						
HL04	736	Hierarchical Child Code Code indicating if there are hierarchical child data segments subordinate to the level being described	O ID 1/1				

Required

Segment: LIN Item Identification

Level: Detail -- Item

Loop: HL

Usage: Optional

Max Use: 1

Purpose: To specify basic item identification data

- Syntax:**
- 1 P0405 - If either LIN04 or LIN05 is present, then the other is required.
 - 2 P0607 - If either LIN06 or LIN07 is present, then the other is required.
 - 3 P0809 - If either LIN08 or LIN09 is present, then the other is required.
 - 4 P1011 - If either LIN10 or LIN11 is present, then the other is required.
 - 5 P1213 - If either LIN12 or LIN13 is present, then the other is required.
 - 6 P1415 - If either LIN14 or LIN15 is present, then the other is required.
 - 7 P1617 - If either LIN16 or LIN17 is present, then the other is required.
 - 8 P1819 - If either LIN18 or LIN19 is present, then the other is required.
 - 9 P2021 - If either LIN20 or LIN21 is present, then the other is required.
 - 10 P2223 - If either LIN22 or LIN23 is present, then the other is required.
 - 11 P2425 - If either LIN24 or LIN25 is present, then the other is required.
 - 12 P2627 - If either LIN26 or LIN27 is present, then the other is required.
 - 13 P2829 - If either LIN28 or LIN29 is present, then the other is required.
 - 14 P3031 - If either LIN30 or LIN31 is present, then the other is required.

Semantic: 1 LIN01 is the line item identification

Comments: A See the Data Dictionary for a complete list of IDs.

B LIN02 through LIN31 provide for fifteen different product/service IDs for each item. For example: Case, Color, Drawing No., U.P.C. No., ISBN No., Model No., or SKU.

Notes: If used at order level, does not need to be repeated at item level.

Data Element Summary

Not Used

REF. DES.	DATA ELE.	NAME	ATTRIBUTES		
LIN01	350	Assigned Identification	O	AN	1/20
Alphanumeric characters assigned for differentiation within a transaction set					
LIN02	235	Product/Service ID Qualifier	M	ID	2/2
Code identifying the type/source of the descriptive number used in Product/Service ID (234)					
		CODE	DEFINITION		
		BP	Buyer's Part Number		
		If a Buyer's Part Number (BP) is not available then select a qualifier from the codes listed under the LIN04 to identify the item.			
LIN03	234	Product/Service ID	M	AN	1/48
Identifying number for a product or service					
LIN04	235	Product/Service ID Qualifier	X	ID	2/2
Code identifying the type/source of the descriptive number used in Product/Service ID (234)					
		CODE	DEFINITION		
		CH	Country of Origin Code		
		SEE CODE SOURCE 5 IN X12 STANDARDS			
		DR	Drawing Revision Number		
		EC	Engineering Change Level		

Data Element Summary

REF. DES.	DATA ELE.	NAME		ATTRIBUTES
		CODE	DEFINITION	
		PO	Purchase Order Number	
		RC	Returnable Container Number	
		VO	Vendor's Order Number	
		VP	Vendor's (Seller's) Part Number	
LIN05	234	Product/Service ID		X AN 1/48
		Identifying number for a product or service		
		LIN06 through LIN31 provide for 13 additional pairs of data elements 235 and 234.		

Segment: SN1 Item Detail (Shipment)

Level: Detail -- Item

Loop: HL

Usage: Optional

Max Use: 1

Purpose: To specify line-item detail relative to shipment

Syntax: 1 P0506 - If either SN105 or SN106 is present, then the other is required.

Semantic: 1 SN101 is the ship notice line-item identification.

Comments: A SN103 defines the unit of measurement for both SN102 and SN104.

Notes: Used to show the net quantity being shipped, the unit of measure and cumulative year-to-date shipments if applicable.

If used at Order level, does not need to be repeated at item level.

Data Element Summary

	REF. DES.	DATA ELE.	NAME	ATTRIBUTES		
Not Used	SN101	350	Assigned Identification Alphanumeric characters assigned for differentiation within a transaction set	O	AN	1/20
	SN102	382	Number of Units Shipped Numeric value of units shipped in manufacturer's shipping units for a line item or transaction set	M	R	1/10
	SN103	355	Unit or Basis for Measurement Code Code specifying the units in which a value is being expressed, or manner in which a measurement has been taken This should be the same Unit of Measure provided on the corresponding releasing document. Any valid X12 code value except mutually defined; 'ZZ'	M	ID	2/2
	SN104	646	Quantity Shipped to Date Number of units shipped to date	O	R	1/15
Not Used	SN105	330	Quantity Ordered Quantity ordered	X	R	1/15
	SN106	355	Unit or Basis for Measurement Code Code specifying the units in which a value is being expressed, or manner in which a measurement has been taken	X	ID	2/2
Not Used	SN107	728	Returnable Container Load Make-Up Code Code identifying the load make-up of the returnable containers in the shipment	O	ID	1/2
Not Used	SN108	668	Line Item Status Code Code specifying the action taken by the seller on a line item requested by the buyer	O	ID	2/2

Segment: **PRF** Purchase Order Reference

Level: Detail -- Item

Loop: HL

Usage: Optional

Max Use: 1

Purpose: To provide reference to a specific purchase order

Semantic: 1 PRF04 is the date assigned by the purchaser to purchase order.

Notes: If used at Order level, does not need to be repeated at item level.

Data Element Summary

REF. DES.	DATA ELE.	NAME	ATTRIBUTES
PRF01	324	Purchase Order Number Identifying number for Purchase Order assigned by the orderer/purchaser Use PO number provided in releasing documents (e.g., 830, 850, 862, 866).	M AN 1/22
PRF02	328	Release Number Number identifying a release against a Purchase Order previously placed by the parties involved in the transaction	O AN 1/30
PRF03	327	Change Order Sequence Number Number assigned by the orderer identifying a specific change or revision to a previously transmitted transaction set	O AN 1/8
PRF04	373	Date Date expressed as CCYYMMDD	O DT 8/8
PRF05	350	Assigned Identification Alphanumeric characters assigned for differentiation within a transaction set	O AN 1/20
PRF06	367	Contract Number Contract number	O AN 1/30
PRF07	92	Purchase Order Type Code Code specifying the type of Purchase Order	O ID 2/2

Not Used

Not Used

Segment: MEA Measurements

Level: Detail -- Item

Loop: HL

Usage: Optional

Max Use: 40

Purpose: To specify physical measurements or counts, including dimensions, tolerances, variances, and weights

- Syntax:**
- 1 R03050608 - At least one of MEA03, MEA05, MEA06 or MEA08 is required.
 - 2 C0504 - If MEA05 is present, then MEA04 is required.
 - 3 C0604 - If MEA06 is present, then MEA04 is required.
 - 4 L07030506 - If MEA07 is present, then at least one of MEA03, MEA05 or MEA06 is required.
 - 5 E0803 - Only one of MEA08 or MEA03 may be present.

Semantic: 1 MEA04 defines the unit of measure for MEA03, MEA05, and MEA06.

Comments: A When citing dimensional tolerances, any measurement requiring a sign (+ or -), or any measurement where a positive (+) value cannot be assumed, use MEA05 as the negative (-) value and MEA06 as the positive (+) value.

Data Element Summary

REF. DES.	DATA ELE.	NAME	ATTRIBUTES		
	MEA01 737	Measurement Reference ID Code	O	ID	2/2
		Code identifying the broad category to which a measurement applies			
		CODE	DEFINITION		
		PD	Physical Dimensions		
	MEA02 738	Measurement Qualifier	O	ID	1/3
		Code identifying a specific product or process characteristic to which a measurement applies			
		CODE	DEFINITION		
		LN	Length		
		TH	Thickness		
		WD	Width		
Required	MEA03 739	Measurement Value	X	R	1/20
		The value of the measurement			
Required	MEA04 355	Unit or Basis for Measurement Code	X	ID	2/2
		Code specifying the units in which a value is being expressed, or manner in which a measurement has been taken			
		MEA04 is a composite data element, C001, which contains 15 simple data elements. AIAG only utilizes the first component of the composite, data element 355. This implementation guideline reflects that decision by substituting 355 for C001, which is syntactically correct. See chapter 3 entitled "Data Formatting" for further explanation of Composite Data Structures.			
		Any valid X12 code value except mutually defined; 'ZZ'			
Not Used	MEA05 740	Range Minimum	X	R	1/20
		The value specifying the minimum of the measurement range			

Data Element Summary

	REF. DES.	DATA ELE.	NAME	ATTRIBUTES		
Not Used	MEA06	741	Range Maximum The value specifying the maximum of the measurement range	X	R	1/20
Not Used	MEA07	935	Measurement Significance Code Code used to benchmark, qualify or further define a measurement value	O	ID	2/2
Not Used	MEA08	936	Measurement Attribute Code Code used to express an attribute response when a numeric measurement value cannot be determined	X	ID	2/2
Not Used	MEA09	752	Surface/Layer/Position Code Code indicating the product surface, layer or position that is being described	O	ID	2/2
Not Used	MEA10	1373	Measurement Method or Device The method or device used to record the measurement	O	ID	2/4

Segment: REF Reference Identification

Level: Detail -- Item

Loop: HL

Usage: Optional

Max Use: >1

Purpose: To specify identifying information

Syntax: 1 R0203 - At least one of REF02 or REF03 is required.

Semantic: 1 REF04 contains data relating to the value cited in REF02.

Data Element Summary

	REF. DES.	DATA ELE.	NAME	ATTRIBUTES		
	REF01	128	Reference Identification Qualifier Code qualifying the Reference Identification For primary metals code value "HC" and "LS" are required.	M	ID	2/3
			CODE	DEFINITION		
			DK	Dock Number		
			HC	Heat Code		
			JS	Job Sequence Number		
			LA	Shipping Label Serial Number		
			LF	Assembly Line Feed Location		
			LS	Bar-Coded Serial Number		
			LT	Lot Number		
			SE	Serial Number		
			VT	Motor Vehicle ID Number		
Required	REF02	127	Reference Identification Reference information as defined for a particular Transaction Set or as specified by the Reference Identification Qualifier	X	AN	1/30
Not Used	REF03	352	Description A free-form description to clarify the related data elements and their content	X	AN	1/80
Not Used	REF04	C040	Reference Identifier To identify one or more reference numbers or identification numbers as specified by the Reference Qualifier	O		

Segment: CLD Load Detail

Level: Detail -- Item

Loop: HL/CLD **Repeat:** 200

Usage: Optional

Max Use: 1

Purpose: To specify the number of material loads shipped

Syntax: 1 C0504 - If CLD05 is present, then CLD04 is required.

Semantic: 1 CLD05 is used to dimension the value given in CLD04.

Comments: A The CLD data segment may be used to provide information to aid in the preparation of move tags and/or bar coded labels.

Notes: This segment is used by the supplier to inform the customer about the number of customer material loads shipped (e.g., pallets), and the quantity per load. The customer will use this information to prepare move tags and/or bar-coded labels to aid in moving material.

Data Element Summary

REF. DES.	DATA ELE.	NAME	ATTRIBUTES
CLD01	622	Number of Loads Number of customer-defined loads shipped by the supplier	M NO 1/5
CLD02	382	Number of Units Shipped Numeric value of units shipped in manufacturer's shipping units for a line item or transaction set Total quantity per container.	M R 1/10
CLD03	103	Packaging Code Code identifying the type of packaging; Part 1: Packaging Form, Part 2: Packaging Material; if the Data Element is used, then Part 1 is always required Any valid X12 code value except mutually defined	O AN 3/5
CLD04	357	Size Size of supplier units in pack	X R 1/8
CLD05	355	Unit or Basis for Measurement Code Code specifying the units in which a value is being expressed, or manner in which a measurement has been taken Any valid X12 code value except mutually defined; 'ZZ'	O ID 2/2

Segment: REF Reference Identification

Level: Detail -- Item

Loop: HL/CLD

Usage: Optional

Max Use: 200

Purpose: To specify identifying information

Syntax: 1 R0203 - At least one of REF02 or REF03 is required.

Semantic: 1 REF04 contains data relating to the value cited in REF02.

Data Element Summary

	REF. DES.	DATA ELE.	NAME		ATTRIBUTES		
			CODE	DEFINITION			
	REF01	128	Reference Identification Qualifier		M	ID	2/3
			Code qualifying the Reference Identification				
			CR	Customer Reference Number			
			LS	Bar-Coded Serial Number			
Required	REF02	127	Reference Identification		X	AN	1/30
			Reference information as defined for a particular Transaction Set or as specified by the Reference Identification Qualifier				
Not Used	REF03	352	Description		X	AN	1/80
			A free-form description to clarify the related data elements and their content				
Not Used	REF04	C040	Reference Identifier		O		
			To identify one or more reference numbers or identification numbers as specified by the Reference Qualifier				

Segment: DTM Date/Time Reference

Level: Detail -- Item

Loop: HL

Usage: Optional

Max Use: 10

Purpose: To specify pertinent dates and times

- Syntax:**
- 1 R020305 - At least one of DTM02, DTM03 or DTM05 is required.
 - 2 C0403 - If DTM04 is present, then DTM03 is required.
 - 3 P0506 - If either DTM05 or DTM06 is present, then the other is required.

Data Element Summary

	REF. DES.	DATA ELE.	NAME	ATTRIBUTES		
	DTM01	374	Date/Time Qualifier Code specifying type of date or time, or both date and time	M	ID	3/3
			CODE DEFINITION			
			011 Shipped			
Required	DTM02	373	Date Date expressed as CCYYMMDD	X	DT	8/8
Required	DTM03	337	Time Time expressed in 24-hour clock time as follows: HHMM, or HHMMSS, or HHMMSSD, or HHMMSSDD, where H = hours (00-23), M = minutes (00-59), S = integer seconds (00-59) and DD = decimal seconds; decimal seconds are expressed as follows: D = tenths (0-9) and DD = hundredths (00-99)	X	TM	4/8
Required	DTM04	623	Time Code Code identifying the time. In accordance with International Standards Organization standard 8601, time can be specified by a + or - and an indication in hours in relation to Universal Time Coordinate (UTC) time; since + is a restricted character, + and - are substituted by P and M in the codes that follow	O	ID	2/2
Not Used	DTM05	1250	Date Time Period Format Qualifier Code indicating the date format, time format, or date and time format	X	ID	2/3
Not Used	DTM06	1251	Date Time Period Expression of a date, a time, or range of dates, times or dates and times	X	AN	1/35

Segment: **N1** **Name**

Level: Detail -- Item

Loop: HL/N1 **Repeat:** 200

Usage: Optional

Max Use: 1

Purpose: To identify a party by type of organization, name, and code

Syntax: 1 R0203 - At least one of N102 or N103 is required.

2 P0304 - If either N103 or N104 is present, then the other is required.

Comments: **A** This segment, used alone, provides the most efficient method of providing organizational identification. To obtain this efficiency the "ID Code" (N104) must provide a key to the table maintained by the transaction processing party.

B N105 and N106 further define the type of entity in N101.

Data Element Summary

REF. DES.	DATA ELE.	NAME	ATTRIBUTES
N101	98	Entity Identifier Code Code identifying an organizational entity, a physical location, property or an individual	M ID 2/3
		CODE DEFINITION	
		SF Ship From	
		ST Ship To	
		SU Supplier/Manufacturer	
N102	93	Name Free-form name	X AN 1/60
Required	N103	Identification Code Qualifier Code designating the system/method of code structure used for Identification Code (67)	X ID 1/2
		CODE DEFINITION	
		1 D-U-N-S Number, Dun & Bradstreet SEE CODE SOURCE 16 IN X12 STANDARDS	
Required	N104	Identification Code Code identifying a party or other code Suppress internal dashes and spaces.	X AN 2/80
Not Used	N105	Entity Relationship Code Code describing entity relationship	O ID 2/2
Not Used	N106	Entity Identifier Code Code identifying an organizational entity, a physical location, property or an individual	O ID 2/3

Segment: REF Reference Identification

Level: Detail -- Item

Loop: HL/N1

Usage: Optional

Max Use: 12

Purpose: To specify identifying information

Syntax: 1 R0203 - At least one of REF02 or REF03 is required.

Semantic: 1 REF04 contains data relating to the value cited in REF02.

Data Element Summary

	REF. DES.	DATA ELE.	NAME		ATTRIBUTES		
			CODE	DEFINITION			
	REF01	128	Reference Identification Qualifier		M	ID	2/3
			Code qualifying the Reference Identification				
			DK	Dock Number			
			LF	Assembly Line Feed Location			
			RL	Reserve Assembly Line Feed Location			
Required	REF02	127	Reference Identification		X	AN	1/30
			Reference information as defined for a particular Transaction Set or as specified by the Reference Identification Qualifier				
Not Used	REF03	352	Description		X	AN	1/80
			A free-form description to clarify the related data elements and their content				
Not Used	REF04	C040	Reference Identifier		O		
			To identify one or more reference numbers or identification numbers as specified by the Reference Qualifier				

Segment: ETD Excess Transportation Detail

Level: Detail -- Item

Loop: HL

Usage: Optional

Max Use: 1

Purpose: To specify information relating to premium transportation

Syntax: 1 P0304 - If either ETD03 or ETD04 is present, then the other is required.

Semantic: 1 ETD03 qualifies the authorization number given in EDT04.

Data Element Summary

REF. DES.	DATA ELE.	NAME	ATTRIBUTES
ETD01	626	Excess Transportation Reason Code Code identifying the reason for shipment via premium transportation rather than the normal mode of transportation Any valid X12 code value except mutually defined; 'ZZ'	M ID 1/2
ETD02	627	Excess Transportation Responsibility Code Code identifying the organization responsible for paying the premium transportation costs CODE DEFINITION A Customer Plant (Receiving Location) S Supplier Authority	M ID 1/1
ETD03	128	Reference Identification Qualifier Code qualifying the Reference Identification CODE DEFINITION AE Authorization for Expense (AFE) Number	X ID 2/3
ETD04	127	Reference Identification Reference information as defined for a particular Transaction Set or as specified by the Reference Identification Qualifier	X AN 1/30
Not Used	ETD05 743	Returnable Container Freight Payment Responsibility Code Code specifying the responsibility for the return freight costs incurred when returnable containers are shipped in a premium transportation	O ID 1/2

Segment: SAC Service, Promotion, Allowance, or Charge Information

Level: Detail -- Item

Loop: HL/SAC **Repeat:** >1

Usage: Optional

Max Use: 1

Purpose: To request or identify a service, promotion, allowance, or charge; to specify the amount or percentage for the service, promotion, allowance, or charge

- Syntax:**
- 1 R0203 - At least one of SAC02 or SAC03 is required.
 - 2 P0304 - If either SAC03 or SAC04 is present, then the other is required.
 - 3 P0607 - If either SAC06 or SAC07 is present, then the other is required.
 - 4 P0910 - If either SAC09 or SAC10 is present, then the other is required.
 - 5 C1110 - If SAC11 is present, then SAC10 is required.
 - 6 L130204 - If SAC13 is present, then at least one of SAC02 or SAC04 is required.
 - 7 C1413 - If SAC14 is present, then SAC13 is required.
 - 8 C1615 - If SAC16 is present, then SAC15 is required.

- Semantic:**
- 1 If SAC01 is "A" or "C", then at least one of SAC05, SAC07, or SAC08 is required.
 - 2 SAC05 is the total amount for the service, promotion, allowance, or charge.
 - 3 If SAC05 is present with SAC07 or SAC08, then SAC05 takes precedence.
 - 4 SAC08 is the allowance or charge rate per unit.
 - 5 SAC10 and SAC11 is the quantity basis when the allowance or charge quantity is different from the purchase order or invoice quantity.
 - 6 SAC10 and SAC11 used together indicate a quantity range, which could be a dollar amount, that is applicable to service, promotion, allowance, or charge.
 - 7 SAC13 is used in conjunction with SAC02 or SAC04 to provide a specific reference number as identified by the code used.
 - 8 SAC14 is used in conjunction with SAC13 to identify an option when there is more than one option of the promotion.
 - 9 SAC16 is used to identify the language being used in SAC15.
- Comments:**
- A** SAC04 may be used to uniquely identify the service, promotion, allowance, or charge. In addition, it may be used in conjunction to further the code in SAC02.
- B** In some business applications, it is necessary to advise the trading partner of the actual dollar amount that a particular allowance, charge, or promotion was based on to reduce ambiguity. This amount is commonly referred to as "Dollar Basis Amount". It is represented in the SAC segment in SAC10 using the qualifier "DO" - Dollars in SAC09.

Data Element Summary

REF. DES.	DATA ELE.	NAME	ATTRIBUTES
SAC01	248	Allowance or Charge Indicator	M ID 1/1
		Code which indicates an allowance or charge for the service specified	
		CODE DEFINITION	
		C Charge	
SAC02	1300	Service, Promotion, Allowance, or Charge Code	X ID 4/4
		Code identifying the service, promotion, allowance, or charge	
		CODE DEFINITION	
		D240 Freight	
		D500 Handling	
		F180 Pallet	

Data Element Summary

	REF. DES.	DATA ELE.	NAME		ATTRIBUTES		
			CODE	DEFINITION			
			G760	Set-up			
			H550	Surcharge			
			I260	Transportation Direct Billing			
			I280	Transportation Vendor Provided			
Not Used	SAC03	559	Agency Qualifier Code		X	ID	2/2
			Code identifying the agency assigning the code values				
Not Used	SAC04	1301	Agency Service, Promotion, Allowance, or Charge Code		X	AN	1/10
			Agency maintained code identifying the service, promotion, allowance, or charge				
	SAC05	610	Amount		O	N2	1/15
			Monetary amount				
Not Used	SAC06	378	Allowance/Charge Percent Qualifier		X	ID	1/1
			Code indicating on what basis allowance or charge percent is calculated				
Not Used	SAC07	332	Percent		X	R	1/6
			Percent expressed as a percent				
Not Used	SAC08	118	Rate		O	R	1/9
			Rate expressed in the standard monetary denomination for the currency specified				
Not Used	SAC09	355	Unit or Basis for Measurement Code		X	ID	2/2
			Code specifying the units in which a value is being expressed, or manner in which a measurement has been taken				
Not Used	SAC10	380	Quantity		X	R	1/15
			Numeric value of quantity				
Not Used	SAC11	380	Quantity		O	R	1/15
			Numeric value of quantity				
	SAC12	331	Allowance or Charge Method of Handling Code		O	ID	2/2
			Code indicating method of handling for an allowance or charge				
			CODE	DEFINITION			
			06	Charge to be Paid by Customer			
Not Used	SAC13	127	Reference Identification		X	AN	1/30
			Reference information as defined for a particular Transaction Set or as specified by the Reference Identification Qualifier				
Not Used	SAC14	770	Option Number		O	AN	1/20
			A unique number identifying available promotion or allowance options when more than one is offered				
Not Used	SAC15	352	Description		X	AN	1/80
			A free-form description to clarify the related data elements and their content				
Not Used	SAC16	819	Language Code		O	ID	2/3
			Code designating the language used in text, from a standard code list maintained by the International Standards Organization (ISO 639)				

Segment: V1 Vessel Identification

Level: Detail -- Item

Loop: HL/V1 **Repeat:** >1

Usage: Optional

Max Use: 1

Purpose: To provide vessel details and voyage number

Syntax: 1 R0102 - At least one of V101 or V102 is required.

2 C0801 - If V108 is present, then V101 is required.

Semantic: 1 V103 is the code identifying the country in which the ship (vessel) is registered.

2 V105 identifies the ocean carrier.

Data Element Summary

REF. DES.	DATA ELE.	NAME	ATTRIBUTES
V101	597	Vessel Code Code identifying vessel	X ID 1/8
V102	182	Vessel Name Name of ship as documented in "Lloyd's Register of Ships"	X AN 2/28
V103	26	Country Code Code identifying the country	O ID 2/3
V104	55	Flight/Voyage Number Identifying designator for the particular flight or voyage on which the cargo travels	O AN 2/10
V105	140	Standard Carrier Alpha Code Standard Carrier Alpha Code	O ID 2/4
V106	249	Vessel Requirement Code Code specifying options for satisfying vessel requirements	O ID 1/1
V107	854	Vessel Type Code Code to determine type of vessel	O ID 2/2
V108	897	Vessel Code Qualifier Code specifying vessel code source	O ID 1/1
V109	91	Transportation Method/Type Code Code specifying the method or type of transportation for the shipment	O ID 1/2

Segment: **R4** Port or Terminal

Level: Detail -- Item

Loop: HL/V1

Usage: Optional

Max Use: >1

Purpose: Contractual or operational port or point relevant to the movement of the cargo

Syntax: 1 P0203 - If either R402 or R403 is present, then the other is required.

Comments: A R4 is required for each port to be identified.

Data Element Summary

REF. DES.	DATA ELE.	NAME	ATTRIBUTES		
R401	115	Port or Terminal Function Code Code defining function performed at the port or terminal with respect to a shipment	M	ID	1/1
R402	309	Location Qualifier Code identifying type of location	X	ID	1/2
R403	310	Location Identifier Code which identifies a specific location	X	AN	1/30
R404	114	Port Name Free-form name for the place at which an offshore carrier originates or terminates (by transshipment or otherwise) its actual ocean carriage of property	O	AN	2/24
R405	26	Country Code Code identifying the country	O	ID	2/3
R406	174	Terminal Name Free-form field for terminal name	O	AN	2/30
R407	113	Pier Number Identifying number for the pier	O	AN	1/4
R408	156	State or Province Code Code (Standard State/Province) as defined by appropriate government agency	O	ID	2/2

Segment: DTM Date/Time Reference

Level: Detail -- Item

Loop: HL/V1

Usage: Optional

Max Use: >1

Purpose: To specify pertinent dates and times

- Syntax:**
- 1 R020305 - At least one of DTM02, DTM03 or DTM05 is required.
 - 2 C0403 - If DTM04 is present, then DTM03 is required.
 - 3 P0506 - If either DTM05 or DTM06 is present, then the other is required.

Data Element Summary

REF. DES.	DATA ELE.	NAME	ATTRIBUTES		
DTM01	374	Date/Time Qualifier Code specifying type of date or time, or both date and time	M	ID	3/3
DTM02	373	Date Date expressed as CCYYMMDD	X	DT	8/8
DTM03	337	Time Time expressed in 24-hour clock time as follows: HHMM, or HHMMSS, or HHMMSSD, or HHMMSSDD, where H = hours (00-23), M = minutes (00-59), S = integer seconds (00-59) and DD = decimal seconds; decimal seconds are expressed as follows: D = tenths (0-9) and DD = hundredths (00-99)	X	TM	4/8
DTM04	623	Time Code Code identifying the time. In accordance with International Standards Organization standard 8601, time can be specified by a + or - and an indication in hours in relation to Universal Time Coordinate (UTC) time; since + is a restricted character, + and - are substituted by P and M in the codes that follow	O	ID	2/2
DTM05	1250	Date Time Period Format Qualifier Code indicating the date format, time format, or date and time format	X	ID	2/3
DTM06	1251	Date Time Period Expression of a date, a time, or range of dates, times or dates and times	X	AN	1/35

Segment: CTT Transaction Totals

Level: Summary

Loop: ____

Usage: Optional

Max Use: 1

Purpose: To transmit a hash total for a specific element in the transaction set

Syntax: 1 P0304 - If either CTT03 or CTT04 is present, then the other is required.

2 P0506 - If either CTT05 or CTT06 is present, then the other is required.

Comments: A This segment is intended to provide hash totals to validate transaction completeness and correctness.

Data Element Summary

	REF. DES.	DATA ELE.	NAME	ATTRIBUTES		
	CTT01	354	Number of Line Items Total number of line items in the transaction set Total number of HL segments	M	NO	1/6
	CTT02	347	Hash Total Sum of values of the specified data element. All values in the data element will be summed without regard to decimal points (explicit or implicit) or signs. Truncation will occur on the left most digits if the sum is greater than the maximum size of the hash total of the data element. Example: -.0018 First occurrence of value being hashed. .18 Second occurrence of value being hashed. 1.8 Third occurrence of value being hashed. 18.01 Fourth occurrence of value being hashed. ----- 1855 Hash total prior to truncation. 855 Hash total after truncation to three-digit field. Hash total of quantity shipped (SN102)	O	R	1/10
Not Used	CTT03	81	Weight Numeric value of weight	X	R	1/10
Not Used	CTT04	355	Unit or Basis for Measurement Code Code specifying the units in which a value is being expressed, or manner in which a measurement has been taken	X	ID	2/2
Not Used	CTT05	183	Volume Value of volumetric measure	X	R	1/8
Not Used	CTT06	355	Unit or Basis for Measurement Code Code specifying the units in which a value is being expressed, or manner in which a measurement has been taken	X	ID	2/2
Not Used	CTT07	352	Description A free-form description to clarify the related data elements and their content	O	AN	1/80

Segment: **SE** Transaction Set Trailer

Level: Summary

Loop: ____

Usage: Mandatory

Max Use: 1

Purpose: To indicate the end of the transaction set and provide the count of the transmitted segments (including the beginning (ST) and ending (SE) segments)

Comments: A SE is the last segment of each transaction set.

Notes: The Transaction Set Control Number value in this trailer must match the same element value in the Transaction Set Header (ST02).

Data Element Summary

REF. DES.	DATA ELE.	NAME	ATTRIBUTES
SE01	96	Number of Included Segments Total number of segments included in a transaction set including ST and SE segments	M NO 1/10
SE02	329	Transaction Set Control Number Identifying control number that must be unique within the transaction set functional group assigned by the originator for a transaction set Same as ST02	M AN 4/9